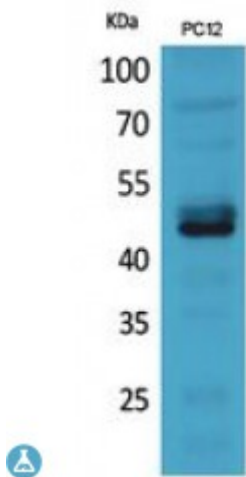


Anti-NKp44 antibody



Description	Rabbit polyclonal to NKp44.
Model	STJ96846
Host	Rabbit
Reactivity	Human
Applications	ELISA, IHC, WB
Immunogen	Synthesized peptide derived from human NKp44.
Immunogen Region	61-110 aa, Internal
Gene ID	9436
Gene Symbol	NCR2
Dilution range	WB 1:500-1:2000IHC-P 1:100-1:300ELISA 1:20000
Specificity	NKp44 Polyclonal Antibody detects endogenous levels of NKp44 protein.
Tissue Specificity	Selectively expressed by activated NK cells and by in vitro cultured (i.e. activated) TCRg/d lymphoid cells.
Purification	The antibody was affinity-purified from rabbit antiserum by affinity-chromatography using epitope-specific immunogen.
Note	For Research Use Only (RUO).
Protein Name	Natural cytotoxicity triggering receptor 2 Lymphocyte antigen 95 homolog NK cell-activating receptor Natural killer cell p44-related protein NK-p44 NKp44 CD antigen CD336
Molecular Weight	44 kDa

Clonality	Polyclonal
Conjugation	Unconjugated
Isotype	IgG
Formulation	Liquid in PBS containing 50% glycerol, 0.5% BSA and 0.02% sodium azide.
Concentration	1 mg/ml
Storage Instruction	Store at -20°C, and avoid repeat freeze-thaw cycles.
Database Links	HGNC:6732OMIM:604531
Alternative Names	Natural cytotoxicity triggering receptor 2 Lymphocyte antigen 95 homolog NK cell-activating receptor Natural killer cell p44-related protein NK-p44 NKp44 CD antigen CD336
Function	Cytotoxicity-activating receptor that may contribute to the increased efficiency of activated natural killer (NK) cells to mediate tumor cell lysis.
Cellular Localization	Cell membrane

St John's Laboratory Ltd

F +44 (0)207 681 2580

T +44 (0)208 223 3081

W <http://www.stjohnslabs.com/>

E info@stjohnslabs.com