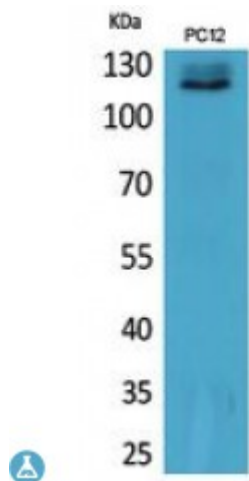


Anti-UBA1 antibody



Description	Rabbit polyclonal to UBA1.
Model	STJ96858
Host	Rabbit
Reactivity	Human, Mouse, Rat
Applications	ELISA, WB
Immunogen	Synthesized peptide derived from human UBA1.
Immunogen Region	91-140 aa, N-terminal
Gene ID	7317
Gene Symbol	UBA1
Dilution range	WB 1:500-1:2000ELISA 1:20000
Specificity	UBA1 Polyclonal Antibody detects endogenous levels of UBA1 protein.
Tissue Specificity	Detected in erythrocytes (at protein level). Ubiquitous.
Purification	The antibody was affinity-purified from rabbit antiserum by affinity-chromatography using epitope-specific immunogen.
Note	For Research Use Only (RUO).
Protein Name	Ubiquitin-like modifier-activating enzyme 1 Protein A1S9 Ubiquitin-activating enzyme E1
Molecular Weight	118 kDa
Clonality	Polyclonal

Conjugation	Unconjugated
Isotype	IgG
Formulation	Liquid in PBS containing 50% glycerol, 0.5% BSA and 0.02% sodium azide.
Concentration	1 mg/ml
Storage Instruction	Store at -20°C, and avoid repeat freeze-thaw cycles.
Database Links	HGNC:12469OMIM:301830
Alternative Names	Ubiquitin-like modifier-activating enzyme 1 Protein A1S9 Ubiquitin-activating enzyme E1
Function	Catalyzes the first step in ubiquitin conjugation to mark cellular proteins for degradation through the ubiquitin-proteasome system . Activates ubiquitin by first adenylating its C-terminal glycine residue with ATP, and thereafter linking this residue to the side chain of a cysteine residue in E1, yielding a ubiquitin-E1 thioester and free AMP . Essential for the formation of radiation-induced foci, timely DNA repair and for response to replication stress. Promotes the recruitment of TP53BP1 and BRCA1 at DNA damage sites .
Sequence and Domain Family	The first 11 amino acids are essential for phosphorylation and exclusive nuclear localization.
Cellular Localization	Cytoplasm Mitochondrion Nucleus Isoform 1: Nucleus Isoform 2: Cytoplasm
Post-translational Modifications	ISGylated.

St John's Laboratory Ltd

F +44 (0)207 681 2580
T +44 (0)208 223 3081

W <http://www.stjohnslabs.com/>
E info@stjohnslabs.com