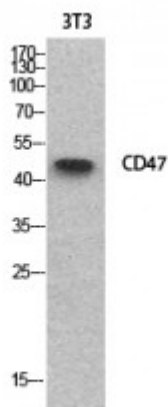


## Anti-CD47 antibody



<b>Description</b>	Rabbit polyclonal to CD47.
<b>Model</b>	STJ96874
<b>Host</b>	Rabbit
<b>Reactivity</b>	Human
<b>Applications</b>	ELISA, IHC, WB
<b>Immunogen</b>	Synthesized peptide derived from human CD47.
<b>Immunogen Region</b>	61-110 aa, Internal
<b>Gene ID</b>	<a href="#">961</a>
<b>Gene Symbol</b>	<a href="#">CD47</a>
<b>Dilution range</b>	WB 1:500-1:2000IHC-P 1:100-1:300ELISA 1:20000
<b>Specificity</b>	CD47 Polyclonal Antibody detects endogenous levels of CD47 protein.
<b>Tissue Specificity</b>	Very broadly distributed on normal adult tissues, as well as ovarian tumors, being especially abundant in some epithelia and the brain.
<b>Purification</b>	The antibody was affinity-purified from rabbit antiserum by affinity-chromatography using epitope-specific immunogen.
<b>Note</b>	For Research Use Only (RUO).
<b>Protein Name</b>	Leukocyte surface antigen CD47 Antigenic surface determinant protein OA3 Integrin-associated protein IAP Protein MER6 CD antigen CD47
<b>Clonality</b>	Polyclonal
<b>Conjugation</b>	Unconjugated

<b>Isotype</b>	IgG
<b>Formulation</b>	Liquid in PBS containing 50% glycerol, 0.5% BSA and 0.02% sodium azide.
<b>Concentration</b>	1 mg/ml
<b>Storage Instruction</b>	Store at -20°C, and avoid repeat freeze-thaw cycles.
<b>Database Links</b>	<a href="#">HGNC:1682OMIM:601028</a>
<b>Alternative Names</b>	Leukocyte surface antigen CD47 Antigenic surface determinant protein OA3 Integrin-associated protein IAP Protein MER6 CD antigen CD47
<b>Function</b>	Has a role in both cell adhesion by acting as an adhesion receptor for THBS1 on platelets, and in the modulation of integrins. Plays an important role in memory formation and synaptic plasticity in the hippocampus . Receptor for SIRPA, binding to which prevents maturation of immature dendritic cells and inhibits cytokine production by mature dendritic cells. Interaction with SIRPG mediates cell-cell adhesion, enhances superantigen-dependent T-cell-mediated proliferation and costimulates T-cell activation. May play a role in membrane transport and/or integrin dependent signal transduction. May prevent premature elimination of red blood cells. May be involved in membrane permeability changes induced following virus infection.
<b>Cellular Localization</b>	Cell membrane

---

**St John's Laboratory Ltd**

**F** +44 (0)207 681 2580  
**T** +44 (0)208 223 3081

**W** <http://www.stjohnslabs.com/>  
**E** [info@stjohnslabs.com](mailto:info@stjohnslabs.com)