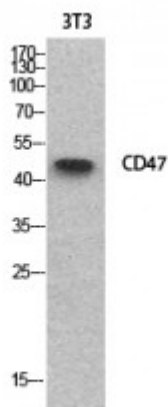


Anti-CD47 antibody



Description	Rabbit polyclonal to CD47.
Model	STJ96874
Host	Rabbit
Reactivity	Human
Applications	ELISA, IHC, WB
Immunogen	Synthesized peptide derived from human CD47.
Immunogen Region	61-110 aa, Internal
Gene ID	961
Gene Symbol	CD47
Dilution range	WB 1:500-1:2000IHC-P 1:100-1:300ELISA 1:20000
Specificity	CD47 Polyclonal Antibody detects endogenous levels of CD47 protein.
Tissue Specificity	Very broadly distributed on normal adult tissues, as well as ovarian tumors, being especially abundant in some epithelia and the brain.
Purification	The antibody was affinity-purified from rabbit antiserum by affinity-chromatography using epitope-specific immunogen.
Note	For Research Use Only (RUO).
Protein Name	Leukocyte surface antigen CD47 Antigenic surface determinant protein OA3 Integrin-associated protein IAP Protein MER6 CD antigen CD47
Clonality	Polyclonal
Conjugation	Unconjugated

Isotype	IgG
Formulation	Liquid in PBS containing 50% glycerol, 0.5% BSA and 0.02% sodium azide.
Concentration	1 mg/ml
Storage Instruction	Store at -20°C, and avoid repeat freeze-thaw cycles.
Database Links	HGNC:1682OMIM:601028
Alternative Names	Leukocyte surface antigen CD47 Antigenic surface determinant protein OA3 Integrin-associated protein IAP Protein MER6 CD antigen CD47
Function	Has a role in both cell adhesion by acting as an adhesion receptor for THBS1 on platelets, and in the modulation of integrins. Plays an important role in memory formation and synaptic plasticity in the hippocampus . Receptor for SIRPA, binding to which prevents maturation of immature dendritic cells and inhibits cytokine production by mature dendritic cells. Interaction with SIRPG mediates cell-cell adhesion, enhances superantigen-dependent T-cell-mediated proliferation and costimulates T-cell activation. May play a role in membrane transport and/or integrin dependent signal transduction. May prevent premature elimination of red blood cells. May be involved in membrane permeability changes induced following virus infection.
Cellular Localization	Cell membrane

St John's Laboratory Ltd

F +44 (0)207 681 2580
T +44 (0)208 223 3081

W <http://www.stjohnslabs.com/>
E info@stjohnslabs.com