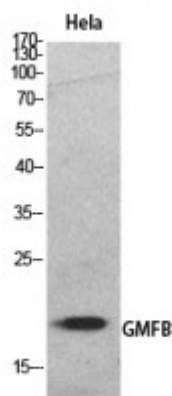


Anti-GMF-beta antibody



Description	Rabbit polyclonal to GMF-beta.
Model	STJ96878
Host	Rabbit
Reactivity	Human, Mouse, Rat
Applications	ELISA, IHC, WB
Immunogen	Synthesized peptide derived from human GMF-beta.
Immunogen Region	1-50 aa, Internal
Gene ID	2764
Gene Symbol	GMFB
Dilution range	WB 1:500-1:2000IHC-P 1:100-1:300ELISA 1:20000
Specificity	GMF-beta Polyclonal Antibody detects endogenous levels of GMF-beta protein.
Purification	The antibody was affinity-purified from rabbit antiserum by affinity-chromatography using epitope-specific immunogen.
Note	For Research Use Only (RUO).
Protein Name	Glia maturation factor beta GMF-beta
Clonality	Polyclonal
Conjugation	Unconjugated
Isotype	IgG

Formulation	Liquid in PBS containing 50% glycerol, 0.5% BSA and 0.02% sodium azide.
Concentration	1 mg/ml
Storage Instruction	Store at -20°C, and avoid repeat freeze-thaw cycles.
Database Links	HGNC:4373OMIM:601713
Alternative Names	Glia maturation factor beta GMF-beta
Function	This protein causes differentiation of brain cells, stimulation of neural regeneration, and inhibition of proliferation of tumor cells.
Post-translational Modifications	Phosphorylated; stimulated by phorbol ester.

St John's Laboratory Ltd

F +44 (0)207 681 2580

T +44 (0)208 223 3081

W <http://www.stjohnslabs.com/>

E info@stjohnslabs.com