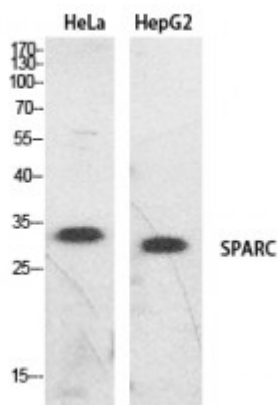


Anti-SPARC antibody



Description	Rabbit polyclonal to SPARC.
Model	STJ96886
Host	Rabbit
Reactivity	Human, Mouse, Rat
Applications	ELISA, IHC, WB
Immunogen	Synthesized peptide derived from human SPARC.
Immunogen Region	141-190 aa, Internal
Gene ID	6678
Gene Symbol	SPARC
Dilution range	WB 1:500-1:2000IHC-P 1:100-1:300ELISA 1:20000
Specificity	SPARC Polyclonal Antibody detects endogenous levels of SPARC protein.
Purification	The antibody was affinity-purified from rabbit antiserum by affinity-chromatography using epitope-specific immunogen.
Note	For Research Use Only (RUO).
Protein Name	SPARC Basement-membrane protein 40 BM-40 Osteonectin ON Secreted protein acidic and rich in cysteine
Clonality	Polyclonal
Conjugation	Unconjugated
Isotype	IgG

Formulation	Liquid in PBS containing 50% glycerol, 0.5% BSA and 0.02% sodium azide.
Concentration	1 mg/ml
Storage Instruction	Store at -20°C, and avoid repeat freeze-thaw cycles.
Database Links	HGNC:11219OMIM:182120
Alternative Names	SPARC Basement-membrane protein 40 BM-40 Osteonectin ON Secreted protein acidic and rich in cysteine
Function	Appears to regulate cell growth through interactions with the extracellular matrix and cytokines. Binds calcium and copper, several types of collagen, albumin, thrombospondin, PDGF and cell membranes. There are two calcium binding sites; an acidic domain that binds 5 to 8 Ca(2+) with a low affinity and an EF-hand loop that binds a Ca(2+) ion with a high affinity.
Cellular Localization	Secreted, extracellular space, extracellular matrix, basement membrane. In or around the basement membrane.

St John's Laboratory Ltd

F +44 (0)207 681 2580

T +44 (0)208 223 3081

W <http://www.stjohnslabs.com/>

E info@stjohnslabs.com