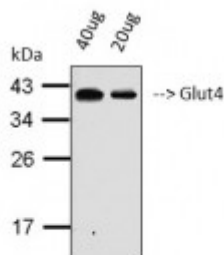


Anti-Glut4 antibody



Western Blot (WB) analysis of SKOV3 cell lysate using Glut4 Antibody (STJ96888) from 2 batches.



Description

Glut4 is a protein encoded by the SLC2A4 gene which is approximately 54,7 kDa. Glut4 is localised to the cell membrane and cytoplasm. It is involved in the transport of glucose, other sugars, bile salts, organic acids and metal ions and AMP-activated protein kinase signalling. This protein falls under the solute carrier family 2 and functions as an insulin-regulated facilitative glucose transporter. In the absence of insulin, it is sequestered within the cells of muscle and adipose tissue. Within minutes of insulin stimulation, the protein moves to the cell surface and begins to transport glucose across the cell membrane. Glut4 is expressed in the skeletal and cardiac muscles, brown and white fat. Mutations in the SLC2A4 gene may be involved in diabetes mellitus. STJ96888 was affinity-purified from rabbit antiserum by affinity-chromatography using epitope-specific immunogen. This polyclonal antibody detects endogenous levels of Glut4 protein.

Model	STJ96888
Host	Rabbit
Reactivity	Human, Mouse, Rat
Applications	ELISA, WB
Immunogen	Synthesized peptide derived from human Glut4.
Immunogen Region	21-70 aa, N-terminal
Gene ID	6517
Gene Symbol	SLC2A4
Dilution range	WB 1:500-1:2000ELISA 1:20000

Specificity	Glut4 Polyclonal Antibody detects endogenous levels of Glut4 protein.
Tissue Specificity	Skeletal and cardiac muscles; brown and white fat.
Purification	The antibody was affinity-purified from rabbit antiserum by affinity-chromatography using epitope-specific immunogen.
Note	For Research Use Only (RUO).
Protein Name	Solute carrier family 2, facilitated glucose transporter member 4 Glucose transporter type 4, insulin-responsive GLUT-4
Clonality	Polyclonal
Conjugation	Unconjugated
Isotype	IgG
Formulation	Liquid in PBS containing 50% glycerol, 0.5% BSA and 0.02% sodium azide.
Concentration	1 mg/ml
Storage Instruction	Store at -20°C, and avoid repeat freeze-thaw cycles.
Database Links	HGNC:11009 OMIM:125853
Alternative Names	Solute carrier family 2, facilitated glucose transporter member 4 Glucose transporter type 4, insulin-responsive GLUT-4
Function	Insulin-regulated facilitative glucose transporter.
Cellular Localization	Cell membrane Endomembrane system Cytoplasm, perinuclear region. Localizes primarily to the perinuclear region, undergoing continued recycling to the plasma membrane where it is rapidly reinternalized. The dileucine internalization motif is critical for intracellular sequestration.
Post-translational Modifications	Sumoylated.