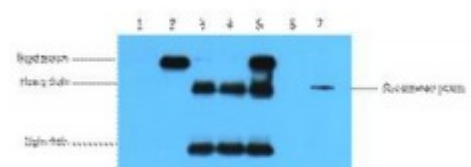


Anti-HA-Tag antibody



Description	Mouse monoclonal to HA-Tag.
Model	STJ96905
Host	Mouse
Applications	IF, IP, WB
Immunogen	Synthetic Peptide
Dilution range	WB 1:5000IP 1:200IF 1:1000
Specificity	The antibody detects C-terminal, internal, and N-terminal HA-tag fusion proteins.
Purification	The antibody was affinity-purified from mouse ascites by affinity-chromatography using specific immunogen.
Clone ID	1B10
Note	For Research Use Only (RUO).
Protein Name	HA-Tag
Clonality	Monoclonal
Conjugation	Unconjugated
Isotype	IgG1
Formulation	Liquid in PBS containing 50% glycerol, 0.5% BSA and 0.02% sodium azide.
Storage Instruction	Store at -20°C, and avoid repeat freeze-thaw cycles.
Alternative Names	HA-Tag

