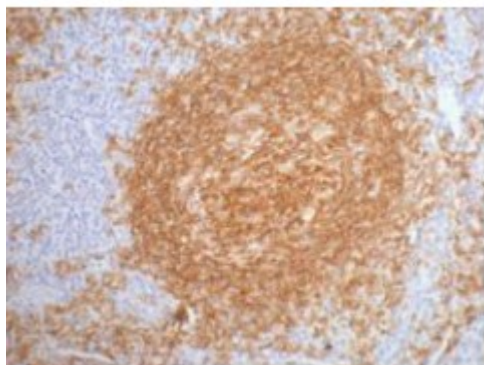


## Anti-CD20 antibody



### Description

CD20 is a protein encoded by the MS4A1 gene which is approximately 33 kDa. CD20 is localised to the cell membrane. It is involved in hematopoietic cell lineage, B-cell development pathways and dendritic cell developmental lineage pathway. This protein falls under the membrane-spanning 4A gene family. It is a B-lymphocyte surface molecule which plays a role in the development and differentiation of B-cells into plasma cells and is specifically expressed in B-cells. Mutations in the MS4A1 gene may be involved in Hodgkin lymphoma. STJ96950 was developed from clone 2F4 and was affinity-purified from mouse ascites by affinity-chromatography using specific immunogen.

|                           |  |
|---------------------------|--|
| <b>Model</b>              | STJ96950   |
| <b>Host</b>               | Mouse  |
| <b>Reactivity</b>         | Human, Mouse, Rat  |
| <b>Applications</b>       | IHC  |
| <b>Immunogen</b>          | Synthetic Peptide  |
| <b>Gene ID</b>            | <a href="#">931</a>  |
| <b>Gene Symbol</b>        | <a href="#">MS4A1</a>  |
| <b>Dilution range</b>     | IHC 1:200  |
| <b>Specificity</b>        | The antibody detects endogenous CD20 proteins.   |
| <b>Tissue Specificity</b> | Expressed on B-cells.  |
| <b>Purification</b>       | The antibody was affinity-purified from mouse ascites by affinity-chromatography using specific immunogen. |

|   |  |
|---|--|
| <b>Clone ID</b>                         | 2F4  |
| <b>Note</b>                             | For Research Use Only (RUO).   |
| <b>Protein Name</b>                     | B-lymphocyte antigen CD20 B-lymphocyte surface antigen B1 Bp35<br>Leukocyte surface antigen Leu-16 Membrane-spanning 4-domains subfamily<br>A member 1 CD antigen CD20 |
| <b>Clonality</b>                        | Monoclonal   |
| <b>Conjugation</b>                      | Unconjugated   |
| <b>Isotype</b>                          | IgG1   |
| <b>Formulation</b>                      | Liquid in PBS containing 50% glycerol, 0.5% BSA and 0.02% sodium azide.  |
| <b>Storage Instruction</b>              | Store at -20°C, and avoid repeat freeze-thaw cycles.   |
| <b>Database Links</b>                   | <a href="https://www.ncbi.nlm.nih.gov/condensedbook/condensedbook.cgi?acc=HGNC:7315OMIM:112210">HGNC:7315OMIM:112210</a>   |
| <b>Alternative Names</b>                | B-lymphocyte antigen CD20 B-lymphocyte surface antigen B1 Bp35<br>Leukocyte surface antigen Leu-16 Membrane-spanning 4-domains subfamily<br>A member 1 CD antigen CD20 |
| <b>Function</b>                         | This protein may be involved in the regulation of B-cell activation and proliferation.   |
| <b>Cellular Localization</b>            | Cell membrane Cell membrane  |
| <b>Post-translational Modifications</b> | Phosphorylated. Might be functionally regulated by protein kinase(s).  |