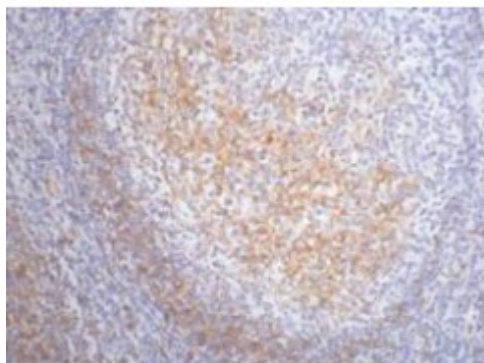


Anti-CD23 antibody



Description

CD23 is a protein encoded by the FCER2 gene which is approximately 36,4 kDa. CD23 is localised to the cell membrane. It is involved in cytokine signalling in immune system, notch2 activation, transmission of signals to the nucleus and B-cell development pathways. It is a B-cell specific antigen and a low-affinity receptor for IgE. It has essential roles in B-cell growth and differentiation, and the regulation of IgE production. It can also exist in a soluble secreted form which functions as a potent mitogenic growth factor. CD23 is expressed in the blood, lymph nodes and spleen. Mutations in the FCER2 gene may result in chronic conjunctivitis. STJ96951 was developed from clone 1E9 and was affinity-purified from mouse ascites by affinity-chromatography using specific immunogen. This primary antibody detects endogenous CD23 proteins.

Model	STJ96951
Host	Mouse
Reactivity	Human, Mouse, Rat
Applications	IHC
Immunogen	Synthetic Peptide
Gene ID	2208
Gene Symbol	FCER2
Dilution range	IHC 1:200
Specificity	The antibody detects endogenous CD23 proteins.
Purification	The antibody was affinity-purified from mouse ascites by affinity-chromatography using specific immunogen.

Clone ID	1000000000
Note	For Research Use Only (RUO).
Protein Name	Low affinity immunoglobulin epsilon Fc receptor BLAST-2 C-type lectin domain family 4 member J Fc-epsilon-RII Immunoglobulin E-binding factor Lymphocyte IgE receptor CD antigen CD23 Low affinity immunoglobulin eps
Clonality	Monoclonal
Conjugation	Unconjugated
Isotype	IgG1
Formulation	Liquid in PBS containing 50% glycerol, 0.5% BSA and 0.02% sodium azide.
Storage Instruction	Store at -20°C, and avoid repeat freeze-thaw cycles.
Database Links	HGNC:3612OMIM:151445
Alternative Names	Low affinity immunoglobulin epsilon Fc receptor BLAST-2 C-type lectin domain family 4 member J Fc-epsilon-RII Immunoglobulin E-binding factor Lymphocyte IgE receptor CD antigen CD23 Low affinity immunoglobulin eps
Function	Low-affinity receptor for immunoglobulin E (IgE) and CR2/CD21. Has essential roles in the regulation of IgE production and in the differentiation of B-cells (it is a B-cell-specific antigen).
Cellular Localization	Cell membrane. Single-pass type II membrane protein. Cell membrane. Lipid-anchor. Secreted. Also exists as a soluble excreted form, sCD23.
Post-translational Modifications	N- and O-glycosylated.; The secreted form sCD23 is produced by ADAM10-mediated ectodomain shedding.