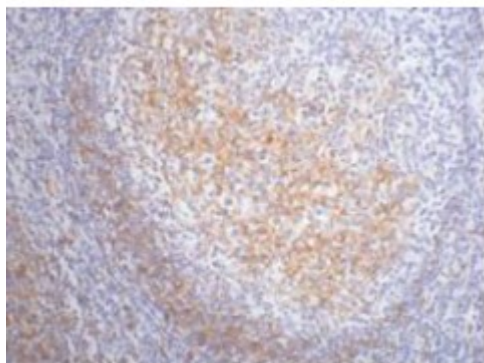


## Anti-CD23 antibody



### Description

CD23 is a protein encoded by the FCER2 gene which is approximately 36,4 kDa. CD23 is localised to the cell membrane. It is involved in cytokine signalling in immune system, notch2 activation, transmission of signals to the nucleus and B-cell development pathways. It is a B-cell specific antigen and a low-affinity receptor for IgE. It has essential roles in B-cell growth and differentiation, and the regulation of IgE production. It can also exist in a soluble secreted form which functions as a potent mitogenic growth factor. CD23 is expressed in the blood, lymph nodes and spleen. Mutations in the FCER2 gene may result in chronic conjunctivitis. STJ96951 was developed from clone 1E9 and was affinity-purified from mouse ascites by affinity-chromatography using specific immunogen. This primary antibody detects endogenous CD23 proteins.

<b>Model</b>	STJ96951
<b>Host</b>	Mouse
<b>Reactivity</b>	Human, Mouse, Rat
<b>Applications</b>	IHC
<b>Immunogen</b>	Synthetic Peptide
<b>Gene ID</b>	<a href="#">2208</a>
<b>Gene Symbol</b>	<a href="#">FCER2</a>
<b>Dilution range</b>	IHC 1:200
<b>Specificity</b>	The antibody detects endogenous CD23 proteins.
<b>Purification</b>	The antibody was affinity-purified from mouse ascites by affinity-chromatography using specific immunogen.

<b>Clone ID</b>	1000000000
<b>Note</b>	For Research Use Only (RUO).
<b>Protein Name</b>	Low affinity immunoglobulin epsilon Fc receptor BLAST-2 C-type lectin domain family 4 member J Fc-epsilon-RII Immunoglobulin E-binding factor Lymphocyte IgE receptor CD antigen CD23 Low affinity immunoglobulin eps
<b>Clonality</b>	Monoclonal
<b>Conjugation</b>	Unconjugated
<b>Isotype</b>	IgG1
<b>Formulation</b>	Liquid in PBS containing 50% glycerol, 0.5% BSA and 0.02% sodium azide.
<b>Storage Instruction</b>	Store at -20°C, and avoid repeat freeze-thaw cycles.
<b>Database Links</b>	<a href="https://www.ncbi.nlm.nih.gov/condensedbook/condensedbook.cgi?acc=HGNC:3612OMIM:151445">HGNC:3612OMIM:151445</a>
<b>Alternative Names</b>	Low affinity immunoglobulin epsilon Fc receptor BLAST-2 C-type lectin domain family 4 member J Fc-epsilon-RII Immunoglobulin E-binding factor Lymphocyte IgE receptor CD antigen CD23 Low affinity immunoglobulin eps
<b>Function</b>	Low-affinity receptor for immunoglobulin E (IgE) and CR2/CD21. Has essential roles in the regulation of IgE production and in the differentiation of B-cells (it is a B-cell-specific antigen).
<b>Cellular Localization</b>	Cell membrane. Single-pass type II membrane protein. Cell membrane. Lipid-anchor. Secreted. Also exists as a soluble excreted form, sCD23.
<b>Post-translational Modifications</b>	N- and O-glycosylated.; The secreted form sCD23 is produced by ADAM10-mediated ectodomain shedding.