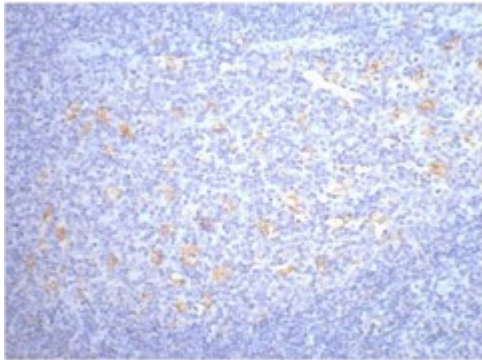


Anti-CD68 antibody



Description

CD68 is a protein encoded by the CD68 gene which is approximately 37,4 kDa. CD68 short isoform is localised to the cell membrane and the long isoform is localised to the endosome membrane. It is involved in the innate immune system, stem cell differentiation pathways and lineage-specific markers. This protein falls under the lysosomal/endosomal-associated membrane glycoprotein family. It is a type I integral membrane protein with a heavily glycosylated extracellular domain and binds to tissue- and organ-specific lectins or selectins. It is also a member of the scavenger receptor family which typically function to clear cellular debris, promote phagocytosis, and mediate the recruitment and activation of macrophages. CD68 is highly expressed by blood monocytes and tissue macrophages. Mutations in the CD68 gene may result in a granular cell tumour. STJ96952 was developed from clone 6F3 and was affinity-purified from mouse ascites by affinity-chromatography using specific immunogen. This primary antibody detects endogenous CD68 proteins.

| | |
|-----------------------|--|
| Model | STJ96952 |
| Host | Mouse |
| Reactivity | Human, Mouse, Rat |
| Applications | IHC |
| Immunogen | Synthetic Peptide |
| Gene ID | 968 |
| Gene Symbol | CD68 |
| Dilution range | IHC 1:200 |
| Specificity | The antibody detects endogenous CD68 proteins. |

| | |
|---|---|
| Tissue Specificity | Highly expressed by blood monocytes and tissue macrophages. Also expressed in lymphocytes, fibroblasts and endothelial cells. Expressed in many tumor cell lines which could allow them to attach to selectins on vascular endothelium, facilitating their dissemination to secondary sites. |
| Purification | The antibody was affinity-purified from mouse ascites by affinity-chromatography using specific immunogen. |
| Clone ID | 6F3 |
| Note | For Research Use Only (RUO). |
| Protein Name | Macrosialin Gp110 CD antigen CD68 |
| Clonality | Monoclonal |
| Conjugation | Unconjugated |
| Isotype | IgG1 |
| Formulation | Liquid in PBS containing 50% glycerol, 0.5% BSA and 0.02% sodium azide. |
| Storage Instruction | Store at -20°C, and avoid repeat freeze-thaw cycles. |
| Database Links | HGNC:16930MIM:153634 |
| Alternative Names | Macrosialin Gp110 CD antigen CD68 |
| Function | Could play a role in phagocytic activities of tissue macrophages, both in intracellular lysosomal metabolism and extracellular cell-cell and cell-pathogen interactions. Binds to tissue- and organ-specific lectins or selectins, allowing homing of macrophage subsets to particular sites. Rapid recirculation of CD68 from endosomes and lysosomes to the plasma membrane may allow macrophages to crawl over selectin-bearing substrates or other cells. |
| Cellular Localization | Isoform Short: Cell membrane. Single-pass type I membrane protein.. Isoform Long: Endosome membrane. Single-pass type I membrane protein. Lysosome membrane. Single-pass type I membrane protein. |
| Post-translational Modifications | N- and O-glycosylated. |