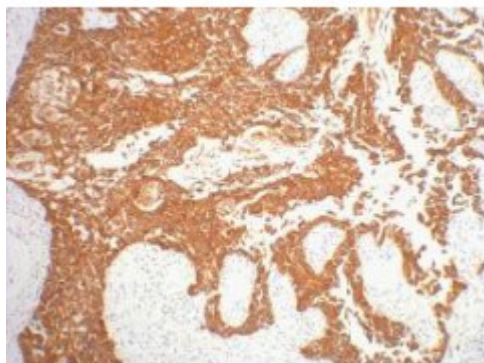


## Anti-CK16 antibody



### Description

CK16 is a protein encoded by the KRT16 gene which is approximately 51,2 kDa. CK16 is localised to the cytoskeleton and nucleus. It is involved in developmental biology, keratinization and cytoskeleton remodelling. It is an epidermis-specific type I keratin that functions as a regulator of innate immunity in response to skin barrier breach which is required for some inflammatory checkpoints for skin barrier maintenance. CK16 is expressed in the skin, liver and blood. Mutations in the KRT16 gene may result in pachyonychia congenital. STJ96958 was developed from clone 6F6 and was affinity-purified from mouse ascites by affinity-chromatography using specific immunogen. This primary antibody detects endogenous CK16 proteins.

<b>Model</b>	STJ96958
<b>Host</b>	Mouse
<b>Reactivity</b>	Human, Mouse, Rat
<b>Applications</b>	IHC
<b>Immunogen</b>	Synthetic Peptide
<b>Gene ID</b>	<a href="#">3868</a>
<b>Gene Symbol</b>	<a href="#">KRT16</a>
<b>Dilution range</b>	IHC 1:200
<b>Specificity</b>	The antibody detects endogenous CK16 proteins.
<b>Tissue Specificity</b>	Expressed in the hair follicle, nail bed and in mucosal stratified squamous epithelia and, suprabasally, in oral epithelium and palmoplantar epidermis. Also found in luminal cells of sweat and mammary gland ducts.

<b>Purification</b>	The antibody was affinity-purified from mouse ascites by affinity-chromatography using specific immunogen.
<b>Clone ID</b>	6F6
<b>Note</b>	For Research Use Only (RUO).
<b>Protein Name</b>	Keratin, type I cytoskeletal 16 Cytokeratin-16 CK-16 Keratin-16 K16
<b>Clonality</b>	Monoclonal
<b>Conjugation</b>	Unconjugated
<b>Isotype</b>	IgG1
<b>Formulation</b>	Liquid in PBS containing 50% glycerol, 0.5% BSA and 0.02% sodium azide.
<b>Storage Instruction</b>	Store at -20°C, and avoid repeat freeze-thaw cycles.
<b>Database Links</b>	<a href="https://www.ncbi.nlm.nih.gov/condensedbook/condensedbook.cgi?HGNC:6423OMIM:148067">HGNC:6423OMIM:148067</a>
<b>Alternative Names</b>	Keratin, type I cytoskeletal 16 Cytokeratin-16 CK-16 Keratin-16 K16
<b>Function</b>	Epidermis-specific type I keratin that plays a key role in skin. Acts as a regulator of innate immunity in response to skin barrier breach: required for some inflammatory checkpoint for the skin barrier maintenance.

---

**St John's Laboratory Ltd**

**F** +44 (0)207 681 2580

**T** +44 (0)208 223 3081

**W** <http://www.stjohnslabs.com/>

**E** [info@stjohnslabs.com](mailto:info@stjohnslabs.com)