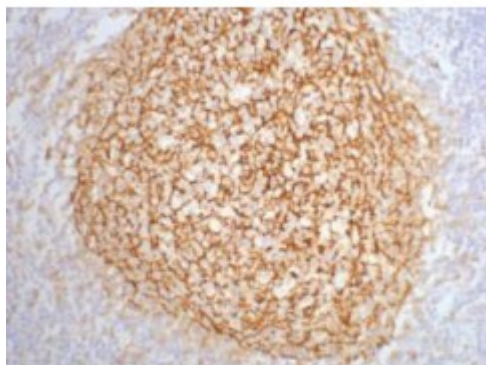


## Anti-CD21 antibody



### Description

CD21 is a protein encoded by the CR2 gene which is approximately 112,9 kDa. CD21 is localised to the cell membrane. It is involved in complement and coagulation cascades and the 4-1BB pathway. It is a membrane protein that functions as a receptor for Epstein-Barr virus binding on B- and T-lymphocytes. CD21 is expressed in the spleen, lymph nodes, blood, intestine and bone marrow. Mutations in the CR2 gene may result in systemic lupus erythematosus. STJ96962 was developed from clone 2C5 and was affinity-purified from mouse ascites by affinity-chromatography using specific immunogen. This primary antibody detects endogenous CD21 proteins.

|                           |  |
|---------------------------|--|
| <b>Model</b>              | STJ96962   |
| <b>Host</b>               | Mouse  |
| <b>Reactivity</b>         | Human, Mouse, Rat  |
| <b>Applications</b>       | IHC  |
| <b>Immunogen</b>          | Synthetic Peptide  |
| <b>Gene ID</b>            | <a href="#">1380</a>   |
| <b>Gene Symbol</b>        | <a href="#">CR2</a>  |
| <b>Dilution range</b>     | IHC 1:200  |
| <b>Specificity</b>        | The antibody detects endogenous CD21 proteins.   |
| <b>Tissue Specificity</b> | Mature B-lymphocytes, T-lymphocytes, pharyngeal epithelial cells, astrocytes and follicular dendritic cells of the spleen. |
| <b>Purification</b>       | The antibody was affinity-purified from mouse ascites by affinity-chromatography using specific immunogen.                 |

|                              |   |
|------------------------------|---|
| <b>Clone ID</b>              | 2C5   |
| <b>Note</b>                  | For Research Use Only (RUO).  |
| <b>Protein Name</b>          | Complement receptor type 2 Cr2 Complement C3d receptor Epstein-Barr virus receptor EBV receptor CD antigen CD21   |
| <b>Clonality</b>             | Monoclonal  |
| <b>Conjugation</b>           | Unconjugated  |
| <b>Isotype</b>               | IgG1  |
| <b>Formulation</b>           | Liquid in PBS containing 50% glycerol, 0.5% BSA and 0.02% sodium azide.   |
| <b>Storage Instruction</b>   | Store at -20°C, and avoid repeat freeze-thaw cycles.  |
| <b>Database Links</b>        | <a href="https://www.ncbi.nlm.nih.gov/condensedcode/HGNC:2336OMIM:120650">HGNC:2336OMIM:120650</a>  |
| <b>Alternative Names</b>     | Complement receptor type 2 Cr2 Complement C3d receptor Epstein-Barr virus receptor EBV receptor CD antigen CD21   |
| <b>Function</b>              | Receptor for complement C3Dd, for the Epstein-Barr virus on human B-cells and T-cells and for HNRPU. Participates in B lymphocytes activation. (Microbial infection) Acts as a receptor for Epstein-Barr virus. |
| <b>Cellular Localization</b> | Membrane. Single-pass type I membrane protein.  |

---

**St John's Laboratory Ltd**

**F** +44 (0)207 681 2580

**T** +44 (0)208 223 3081

**W** <http://www.stjohnslabs.com/>

**E** [info@stjohnslabs.com](mailto:info@stjohnslabs.com)