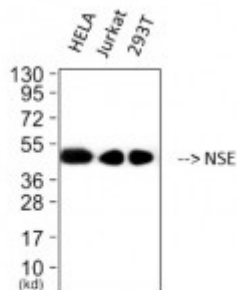


## Anti-NSE antibody



Western Blot (WB) analysis of 1. HELA 2. Jurkat 3. 293T cells using NSE Monoclonal Antibody. (STJ96968)



### Description

NSE is a protein encoded by the ENO2 gene which is approximately 47,2 kDa. NSE is localised to the cytoplasm and cell membrane. It is involved in glucose metabolism, carbon metabolism, the HIF-1 signalling pathway and deadenylation-dependent mRNA decay. It is one of the three enolase isoenzymes found in mammals. It has neurotrophic and neuroprotective properties on a broad spectrum of central nervous system neurons and binds, in a calcium-dependent manner, to cultured neocortical neurons and promotes cell survival. NSE is expressed in the cells of the nervous system, eye, blood, liver and kidney. Mutations in the ENO2 gene may result in a granular cell tumour. STJ96968 was developed from clone 13E2 and was affinity-purified from mouse ascites by affinity-chromatography using specific immunogen. This primary antibody detects endogenous NSE proteins.

<b>Model</b>	STJ96968
<b>Host</b>	Mouse
<b>Reactivity</b>	Human, Mouse, Rat
<b>Applications</b>	IHC, WB
<b>Immunogen</b>	Synthetic Peptide
<b>Gene ID</b>	<a href="#">2026</a>
<b>Gene Symbol</b>	<a href="#">ENO2</a>
<b>Dilution range</b>	WB 1:2000IHC 1:200
<b>Specificity</b>	The antibody detects endogenous NSE proteins.
<b>Tissue Specificity</b>	The alpha/alpha homodimer is expressed in embryo and in most adult tissues.

The alpha/beta heterodimer and the beta/beta homodimer are found in striated muscle, and the alpha/gamma heterodimer and the gamma/gamma homodimer in neurons.

<b>Purification</b>	The antibody was affinity-purified from mouse ascites by affinity-chromatography using specific immunogen.
<b>Clone ID</b>	1300
<b>Note</b>	For Research Use Only (RUO).
<b>Protein Name</b>	Gamma-enolase 2-phospho-D-glycerate hydro-lyase Enolase 2 Neural enolase Neuron-specific enolase NSE
<b>Clonality</b>	Monoclonal
<b>Conjugation</b>	Unconjugated
<b>Isotype</b>	IgG1
<b>Formulation</b>	Liquid in PBS containing 50% glycerol, 0.5% BSA and 0.02% sodium azide.
<b>Storage Instruction</b>	Store at -20°C, and avoid repeat freeze-thaw cycles.
<b>Database Links</b>	<a href="https://www.ebi.ac.uk/ENSP/entry/HGNC:3353OMIM:131360">HGNC:3353OMIM:131360</a>
<b>Alternative Names</b>	Gamma-enolase 2-phospho-D-glycerate hydro-lyase Enolase 2 Neural enolase Neuron-specific enolase NSE
<b>Function</b>	Has neurotrophic and neuroprotective properties on a broad spectrum of central nervous system (CNS) neurons. Binds, in a calcium-dependent manner, to cultured neocortical neurons and promotes cell survival .
<b>Cellular Localization</b>	Cytoplasm Cell membrane. Can translocate to the plasma membrane in either the homodimeric (alpha/alpha) or heterodimeric (alpha/gamma) form.