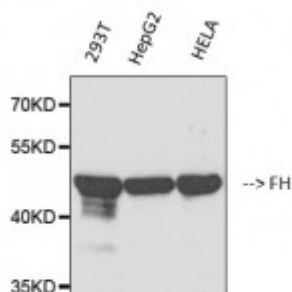


Anti-FH antibody



Western Blot (WB) analysis of 1. 293T 2. HepG2 3. HELA cells using FH Monoclonal Antibody. (STJ96975)



Description

FH is a protein encoded by the FH gene which is approximately 54,6 kDa. FH is localised to the cytoplasm and mitochondrion. It is involved in pyruvate metabolism, citric acid cycle and carbon metabolism. It is an enzymatic component of the tricarboxylic acid cycle and catalyses the formation of L-malate from fumarate. It can exist in both a cytosolic form and an N-terminal extended form, differing only in the translation start site used. The N-terminal extended form is targeted to the mitochondrion, where the removal of the extension generates the same form as in the cytoplasm. FH is expressed in the cells of the nervous system, liver, skin, kidney and muscle. Mutations in the FH gene may result in fumarase deficiency. STJ96975 was developed from clone 7F1 and was affinity-purified from mouse ascites by affinity-chromatography using specific immunogen. This antibody detects endogenous FH proteins.

Model	STJ96975
Host	Mouse
Reactivity	Human, Mouse, Rat
Applications	WB
Immunogen	Synthetic Peptide
Gene ID	2271
Gene Symbol	FH
Dilution range	WB 1:3000
Specificity	The antibody detects endogenous FH proteins.
Tissue Specificity	Expressed in red blood cells; underexpressed in red blood cells (cytoplasm) of

patients with hereditary non-spherocytic hemolytic anemia of unknown etiology.

Purification	The antibody was affinity-purified from mouse ascites by affinity-chromatography using specific immunogen.
Clone ID	7F1
Note	For Research Use Only (RUO).
Protein Name	Fumarate hydratase, mitochondrial Fumarase
Clonality	Monoclonal
Conjugation	Unconjugated
Isotype	IgG1
Formulation	Liquid in PBS containing 50% glycerol, 0.5% BSA and 0.02% sodium azide.
Storage Instruction	Store at -20°C, and avoid repeat freeze-thaw cycles.
Database Links	HGNC:37000MIM:136850
Alternative Names	Fumarate hydratase, mitochondrial Fumarase
Function	Also acts as a tumor suppressor.
Cellular Localization	Isoform Mitochondrial: Mitochondrion.. Isoform Cytoplasmic: Cytoplasm.

St John's Laboratory Ltd

F +44 (0)207 681 2580
T +44 (0)208 223 3081

W <http://www.stjohnslabs.com/>
E info@stjohnslabs.com