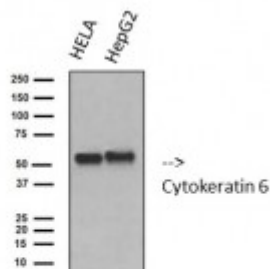


Anti-Cytokeratin 6 antibody



Western Blot (WB) analysis of 1. HELA 2. HepG2 cells using Cytokeratin 6 Monoclonal Antibody. (STJ96982)



Description

Cytokeratin 6 is a protein encoded by the KRT6B gene which is approximately 60 kDa. Cytokeratin 6 is localised to the cytosol. It is involved in cytoskeletal signalling, developmental biology and keratinization. It consists of basic or neutral proteins which are arranged in pairs of heterotypic keratin chains co-expressed during differentiation of simple and stratified epithelial tissues. Cytokeratin 6 is constitutively expressed in distinct types of epithelial cells such as those in oral mucosa, oesophagus and the hair follicle outer root sheath. Mutations in the KRT6B gene may result in glossitis. STJ96982 was developed from clone 4A1 and was affinity-purified from mouse ascites by affinity-chromatography using specific immunogen. This antibody detects endogenous Cytokeratin 6 proteins.

Model	STJ96982
Host	Mouse
Reactivity	Human
Applications	WB
Immunogen	Synthetic Peptide
Gene ID	3853
Gene Symbol	KRT6A
Dilution range	WB 1:1000
Specificity	The antibody detects endogenous Cytokeratin 6 proteins.
Tissue Specificity	Constitutively expressed in distinct types of epithelia such as those in oral mucosa, esophagus, papillae of tongue and hair follicle outer root sheath.

Purification	The antibody was affinity-purified from mouse ascites by affinity-chromatography using specific immunogen.
Clone ID	4A1
Note	For Research Use Only (RUO).
Protein Name	Keratin, type II cytoskeletal 6A Cytokeratin-6A CK-6A Cytokeratin-6D CK-6D Keratin-6A K6A Type-II keratin Kb6 allergen Hom s 5
Clonality	Monoclonal
Conjugation	Unconjugated
Isotype	IgG1
Formulation	Liquid in PBS containing 50% glycerol, 0.5% BSA and 0.02% sodium azide.
Storage Instruction	Store at -20°C, and avoid repeat freeze-thaw cycles.
Database Links	HGNC:6443OMIM:148041
Alternative Names	Keratin, type II cytoskeletal 6A Cytokeratin-6A CK-6A Cytokeratin-6D CK-6D Keratin-6A K6A Type-II keratin Kb6 allergen Hom s 5
Function	Epidermis-specific type I keratin involved in wound healing. Involved in the activation of follicular keratinocytes after wounding, while it does not play a major role in keratinocyte proliferation or migration. Participates in the regulation of epithelial migration by inhibiting the activity of SRC during wound repair.