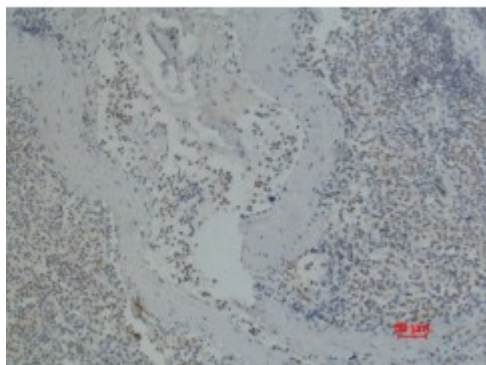


Anti-CD41 antibody



Description

CD41 is a protein encoded by the ITGA2B gene which is approximately 113,3 kDa. CD41 is localised to the cell membrane. It is involved in RET signalling, apoptotic pathways, the integrin pathway and focal adhesion. This protein falls under the integrin alpha chain family of proteins. It is a cell-surface receptor that exist as a heterodimer of alpha and beta subunits. This receptor plays a crucial role in the blood coagulation system, by mediating platelet aggregation. CD41 is expressed in the bone marrow, lung, spleen, blood and heart. Mutations in the ITGA2B gene may result in glanzmann thrombasthenia. STJ97008 was developed from clone Q90 and was affinity-purified from mouse ascites by affinity-chromatography using specific immunogen. The antibody detects endogenous human CD41 protein.

Model	STJ97008
Host	Mouse
Reactivity	Human
Applications	IHC
Immunogen	Synthetic Peptide
Gene ID	3674
Gene Symbol	ITGA2B
Dilution range	IHC 1:100
Specificity	The antibody detects endogenous human CD41/ Intergrin alpha2b protein.
Tissue Specificity	Isoform 1 and isoform 2 are expressed in platelets and megakaryocytes, but not in reticulocytes. Not detected in Jurkat, nor in U937 cell lines . Isoform 3

is expressed in prostate adenocarcinoma, as well as in several erythroleukemia, prostate adenocarcinoma and melanoma cell lines, including PC-3, DU-145, HEL, WM983A, WM983B and WM35. Not detected in platelets, nor in normal prostate (at protein level) .

Purification	The antibody was affinity-purified from mouse ascites by affinity-chromatography using specific immunogen.
Clone ID	Q90
Note	For Research Use Only (RUO).
Protein Name	Integrin alpha-IIb GPalpha IIb GPIIb Platelet membrane glycoprotein IIb CD antigen CD41 Integrin alpha-IIb heavy chain Integrin alpha-IIb light chain, form 1 Integrin alpha-IIb light chain, form 2
Clonality	Monoclonal
Conjugation	Unconjugated
Isotype	IgG1
Formulation	Liquid in PBS containing 50% glycerol, 0.5% BSA and 0.02% sodium azide.
Storage Instruction	Store at -20°C, and avoid repeat freeze-thaw cycles.
Database Links	HGNC:6138OMIM:187800
Alternative Names	Integrin alpha-IIb GPalpha IIb GPIIb Platelet membrane glycoprotein IIb CD antigen CD41 Integrin alpha-IIb heavy chain Integrin alpha-IIb light chain, form 1 Integrin alpha-IIb light chain, form 2
Function	Integrin alpha-IIb/beta-3 is a receptor for fibronectin, fibrinogen, plasminogen, prothrombin, thrombospondin and vitronectin. It recognizes the sequence R-G-D in a wide array of ligands. It recognizes the sequence H-H-L-G-G-G-A-K-Q-A-G-D-V in fibrinogen gamma chain. Following activation integrin alpha-IIb/beta-3 brings about platelet/platelet interaction through binding of soluble fibrinogen. This step leads to rapid platelet aggregation which physically plugs ruptured endothelial cell surface.
Cellular Localization	Membrane. Single-pass type I membrane protein.