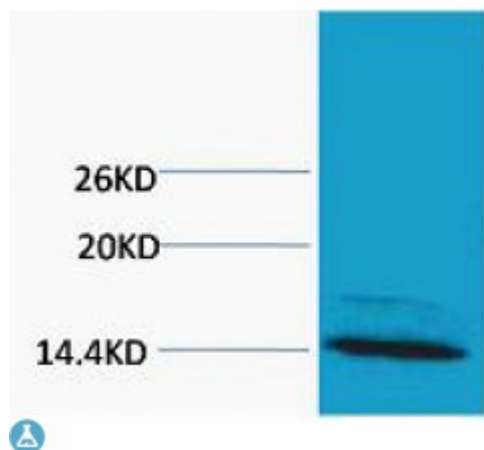


Anti-Histone H4 (Mono Methyl Arg3) antibody



Description	Rabbit polyclonal to Histone H4 (Mono Methyl Arg3).
Model	STJ97197
Host	Rabbit
Reactivity	Human
Applications	WB
Immunogen	Synthetic Peptide
Gene ID	121504
Gene Symbol	HIST1H4A
Dilution range	WB 1:1000-2000
Specificity	The antibody detects endogenous Histone H3 (Mono Methyl Arg3) protein.
Purification	The antibody was affinity-purified from rabbit ascites by affinity-chromatography using specific immunogen.
Note	For Research Use Only (RUO).
Protein Name	Histone H4
Clonality	Polyclonal
Conjugation	Unconjugated
Isotype	IgG
Formulation	Liquid in PBS containing 50% glycerol, 0.5% BSA and 0.02% sodium azide.
Storage Instruction	Store at -20°C, and avoid repeat freeze-thaw cycles.

Database Links[HGNC:4781OMIM:142750](#)**Alternative Names**

Histone H4

St John's Laboratory Ltd**F** +44 (0)207 681 2580**T** +44 (0)208 223 3081**W** <http://www.stjohnslabs.com/>**E** info@stjohnslabs.com