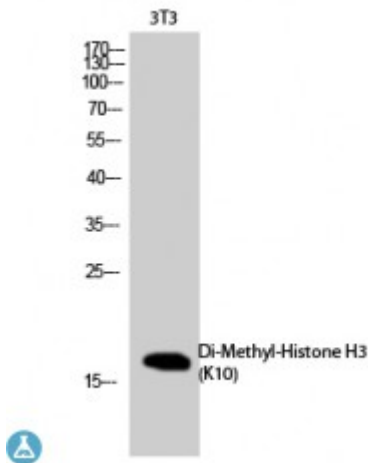


Anti-Di-Methyl-Histone H3 (K10) antibody



Description	Rabbit polyclonal to Di-Methyl-Histone H3 (K10).
Model	STJ97223
Host	Rabbit
Reactivity	Human, Mouse, Rat
Applications	ELISA, IHC, WB
Immunogen	Synthesized peptide derived from human Histone H3 around the di-methylation site of K10.
Immunogen Region	N-terminal
Gene ID	8350
Gene Symbol	HIST1H3A HIST1H3B HIST1H3C HIST1H3D HIST1H3E HIST1H3F HIST1H3G HIST1H3H HIST1H3I HIST1H3J
Dilution range	WB 1:500-1:2000 IHC-P 1:100-300 ELISA 1:10000
Specificity	Di-Methyl-Histone H3 (K10) Polyclonal Antibody detects endogenous levels of Histone H3 protein only when di-methylated at K10.
Purification	The antibody was affinity-purified from rabbit antiserum by affinity-chromatography using epitope-specific immunogen.
Note	For Research Use Only (RUO).
Protein Name	Histone H3.1 Histone H3/a Histone H3/b Histone H3/c Histone H3/d Histone H3/f Histone H3/h Histone H3/i Histone H3/j Histone H3/k Histone H3/l
Clonality	Polyclonal

Conjugation	Unconjugated
Isotype	IgG
Formulation	Liquid in PBS containing 50% glycerol, 0.5% BSA and 0.02% sodium azide.
Concentration	1 mg/ml
Storage Instruction	Store at -20°C, and avoid repeat freeze-thaw cycles.
Database Links	HGNC:4766OMIM:137800
Alternative Names	Histone H3.1 Histone H3/a Histone H3/b Histone H3/c Histone H3/d Histone H3/f Histone H3/h Histone H3/i Histone H3/j Histone H3/k Histone H3/l

St John's Laboratory Ltd

F +44 (0)207 681 2580

T +44 (0)208 223 3081

W <http://www.stjohnslabs.com/>

E info@stjohnslabs.com