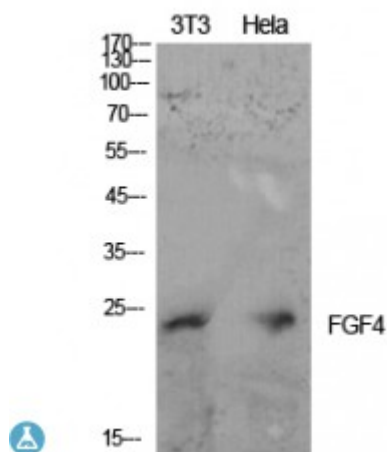


Anti-FGF-4 antibody



| | |
|-------------------------|--|
| Description | Rabbit polyclonal to FGF-4. |
| Model | STJ97247 |
| Host | Rabbit |
| Reactivity | Human, Mouse, Rat |
| Applications | ELISA, WB |
| Immunogen | Synthesized peptide derived from human FGF-4. |
| Immunogen Region | C-terminal |
| Gene ID | 2249 |
| Gene Symbol | FGF4 |
| Dilution range | WB 1:500-1:2000ELISA 1:10000 |
| Specificity | FGF-4 Polyclonal Antibody detects endogenous levels of FGF-4 protein. |
| Purification | The antibody was affinity-purified from rabbit antiserum by affinity-chromatography using epitope-specific immunogen. |
| Note | For Research Use Only (RUO). |
| Protein Name | Fibroblast growth factor 4 FGF-4 Heparin secretory-transforming protein 1 HST HST-1 HSTF-1 Heparin-binding growth factor 4 HBGF-4 Transforming protein KS3 |
| Clonality | Polyclonal |
| Conjugation | Unconjugated |
| Isotype | IgG |

| | |
|------------------------------|--|
| Formulation | Liquid in PBS containing 50% glycerol, 0.5% BSA and 0.02% sodium azide. |
| Concentration | 1 mg/ml |
| Storage Instruction | Store at -20°C, and avoid repeat freeze-thaw cycles. |
| Database Links | HGNC:3682OMIM:164980 |
| Alternative Names | Fibroblast growth factor 4 FGF-4 Heparin secretory-transforming protein 1 HST HST-1 HSTF-1 Heparin-binding growth factor 4 HBGF-4 Transforming protein KS3 |
| Function | Plays an important role in the regulation of embryonic development, cell proliferation, and cell differentiation. Required for normal limb and cardiac valve development during embryogenesis. |
| Cellular Localization | Secreted |

St John's Laboratory Ltd

F +44 (0)207 681 2580

T +44 (0)208 223 3081

W <http://www.stjohnslabs.com/>

E info@stjohnslabs.com