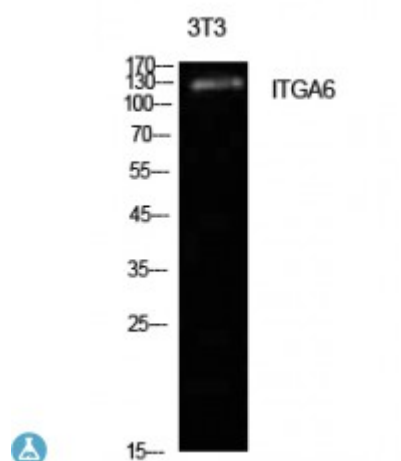


Anti-Integrin alpha antibody



Description	Rabbit polyclonal to Integrin alpha6.
Model	STJ97285
Host	Rabbit
Reactivity	Human, Mouse, Rat
Applications	ELISA, WB
Immunogen	Synthesized peptide derived from human Integrin alpha6.
Immunogen Region	901-950 aa, Internal
Gene ID	3655
Gene Symbol	ITGA6
Dilution range	WB 1:500-1:2000ELISA 1:10000
Specificity	Integrin alpha6 Polyclonal Antibody detects endogenous levels of Integrin alpha6 protein.
Tissue Specificity	Integrin alpha-6/beta-4 is predominantly expressed by epithelia. Isoforms containing segment X1 are ubiquitously expressed. Isoforms containing segment X1X2 are expressed in heart, kidney, placenta, colon, duodenum, myoblasts and myotubes, and in a limited number of cell lines; they are always coexpressed with the ubiquitous isoform containing segment X1. In some tissues (e.g. Salivary gland), isoforms containing cytoplasmic segment A and isoforms containing segment B are detected while in others, only iso
Purification	The antibody was affinity-purified from rabbit antiserum by affinity-chromatography using epitope-specific immunogen.

Note	For Research Use Only (RUO).
Protein Name	Integrin alpha-6 CD49 antigen-like family member F VLA-6 CD antigen CD49f Integrin alpha-6 heavy chain Integrin alpha-6 light chain Processed integrin alpha-6 Alpha6p
Clonality	Polyclonal
Conjugation	Unconjugated
Isotype	IgG
Formulation	Liquid in PBS containing 50% glycerol, 0.5% BSA and 0.02% sodium azide.
Concentration	1 mg/ml
Storage Instruction	Store at -20°C, and avoid repeat freeze-thaw cycles.
Database Links	HGNC:6142OMIM:147556
Alternative Names	Integrin alpha-6 CD49 antigen-like family member F VLA-6 CD antigen CD49f Integrin alpha-6 heavy chain Integrin alpha-6 light chain Processed integrin alpha-6 Alpha6p
Function	Integrin alpha-6/beta-1 is a receptor for laminin on platelets. Integrin alpha-6/beta-4 is a receptor for laminin in epithelial cells and it plays a critical structural role in the hemidesmosome . ITGA6:ITGB4 binds to NRG1 (via EGF domain) and this binding is essential for NRG1-ERBB signaling . ITGA6:ITGB4 binds to IGF1 and this binding is essential for IGF1 signaling .
Cellular Localization	Cell membrane Cell membrane
Post-translational Modifications	Isoforms containing segment A, but not segment B, are the major targets for PMA-induced phosphorylation. Phosphorylation occurs on 'Ser-1103' of isoform alpha-6X1X2A. Phosphorylation is not required for the induction of integrin alpha-6A/beta-1 high affinity but may reduce the affinity for ligand.; In invasive prostate cancer ITGA6 undergoes PLAU-mediated cleavage at residues Arg-634-635-Arg in a time-dependent manner enhancing cell invasion and migration in vitro. Palmitoylation by DHHC3 enhances stability and cell surface expression.