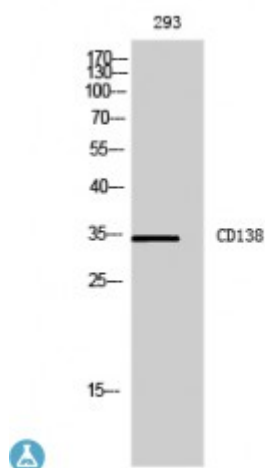


Anti-CD138 antibody



Description	Rabbit polyclonal to CD138.
Model	STJ97305
Host	Rabbit
Reactivity	Human
Applications	ELISA, IHC, WB
Immunogen	Synthesized peptide derived from human CD138.
Immunogen Region	191-240 aa, Internal
Gene ID	6382
Gene Symbol	SDC1
Dilution range	WB 1:500-1:2000IHC-P 1:100-1:300ELISA 1:10000
Specificity	CD138 Polyclonal Antibody detects endogenous levels of CD138 protein.
Purification	The antibody was affinity-purified from rabbit antiserum by affinity-chromatography using epitope-specific immunogen.
Note	For Research Use Only (RUO).
Protein Name	Syndecan-1 SYND1 CD antigen CD138
Clonality	Polyclonal
Conjugation	Unconjugated
Isotype	IgG
Formulation	Liquid in PBS containing 50% glycerol, 0.5% BSA and 0.02% sodium azide.

Concentration	1 mg/ml
Storage Instruction	Store at -20°C, and avoid repeat freeze-thaw cycles.
Database Links	HGNC:10658OMIM:186355
Alternative Names	Syndecan-1 SYND1 CD antigen CD138
Function	Cell surface proteoglycan that bears both heparan sulfate and chondroitin sulfate and that links the cytoskeleton to the interstitial matrix. Regulates exosome biogenesis in concert with SDCBP and PDCD6IP .
Cellular Localization	Membrane Secreted Secreted, exosome. Shedding of the ectodomain produces a soluble form.
Post-translational Modifications	Shedding is enhanced by a number of factors such as heparanase, thrombin or EGF. Also by stress and wound healing. PMA-mediated shedding is inhibited by TIMP3.

St John's Laboratory Ltd

F +44 (0)207 681 2580
T +44 (0)208 223 3081

W <http://www.stjohnslabs.com/>
E info@stjohnslabs.com