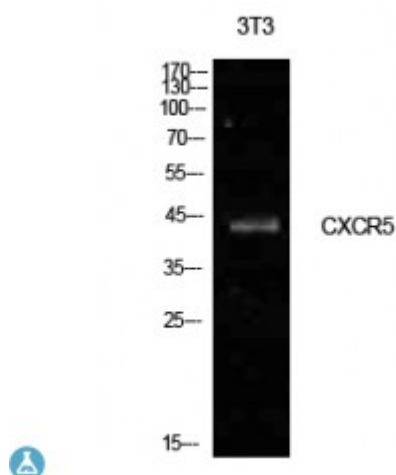


Anti-Blr1 antibody



Description	Rabbit polyclonal to Blr1.
Model	STJ97308
Host	Rabbit
Reactivity	Human
Applications	ELISA, WB
Immunogen	Synthesized peptide derived from human Blr1.
Immunogen Region	1-50 aa, N-terminal
Gene ID	643
Gene Symbol	CXCR5
Dilution range	WB 1:500-1:2000ELISA 1:10000
Specificity	Blr1 Polyclonal Antibody detects endogenous levels of Blr1 protein.
Tissue Specificity	Expression in mature B-cells and Burkitt lymphoma cells.
Purification	The antibody was affinity-purified from rabbit antiserum by affinity-chromatography using epitope-specific immunogen.
Note	For Research Use Only (RUO).
Protein Name	C-X-C chemokine receptor type 5 CXC-R5 CXCR-5 Burkitt lymphoma receptor 1 Monocyte-derived receptor 15 MDR-15 CD antigen CD185
Clonality	Polyclonal
Conjugation	Unconjugated

Isotype	IgG
Formulation	Liquid in PBS containing 50% glycerol, 0.5% BSA and 0.02% sodium azide.
Concentration	1 mg/ml
Storage Instruction	Store at -20°C, and avoid repeat freeze-thaw cycles.
Database Links	HGNC:10600MIM:601613
Alternative Names	C-X-C chemokine receptor type 5 CXC-R5 CXCR-5 Burkitt lymphoma receptor 1 Monocyte-derived receptor 15 MDR-15 CD antigen CD185
Function	Cytokine receptor that binds to B-lymphocyte chemoattractant (BLC). Involved in B-cell migration into B-cell follicles of spleen and Peyer patches but not into those of mesenteric or peripheral lymph nodes. May have a regulatory function in Burkitt lymphoma (BL) lymphomagenesis and/or B-cell differentiation.
Cellular Localization	Cell membrane. Multi-pass membrane protein.

St John's Laboratory Ltd

F +44 (0)207 681 2580

T +44 (0)208 223 3081

W <http://www.stjohnslabs.com/>

E info@stjohnslabs.com