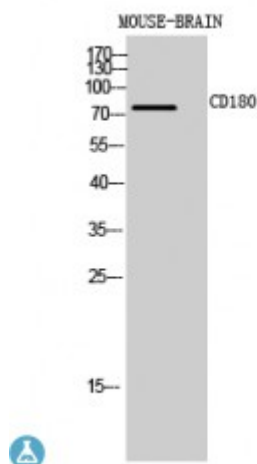


## Anti-CD180 antibody



<b>Description</b>	Rabbit polyclonal to CD180.
<b>Model</b>	STJ97324
<b>Host</b>	Rabbit
<b>Reactivity</b>	Human, Mouse, Rat
<b>Applications</b>	ELISA, WB
<b>Immunogen</b>	Synthesized peptide derived from human CD180.
<b>Immunogen Region</b>	221-270 aa, Internal
<b>Gene ID</b>	<a href="#">4064</a>
<b>Gene Symbol</b>	<a href="#">CD180</a>
<b>Dilution range</b>	WB 1:500-1:2000ELISA 1:10000
<b>Specificity</b>	CD180 Polyclonal Antibody detects endogenous levels of CD180 protein.
<b>Tissue Specificity</b>	Expressed mainly on mature peripheral B cells. Detected in spleen, lymph node and appendix. Not detected in pre-B and -T cells.
<b>Purification</b>	The antibody was affinity-purified from rabbit antiserum by affinity-chromatography using epitope-specific immunogen.
<b>Note</b>	For Research Use Only (RUO).
<b>Protein Name</b>	CD180 antigen Lymphocyte antigen 64 Radioprotective 105 kDa protein CD antigen CD180
<b>Clonality</b>	Polyclonal
<b>Conjugation</b>	Unconjugated

<b>Isotype</b>	IgG
<b>Formulation</b>	Liquid in PBS containing 50% glycerol, 0.5% BSA and 0.02% sodium azide.
<b>Concentration</b>	1 mg/ml
<b>Storage Instruction</b>	Store at -20°C, and avoid repeat freeze-thaw cycles.
<b>Database Links</b>	<a href="#">HGNC:6726OMIM:602226</a>
<b>Alternative Names</b>	CD180 antigen Lymphocyte antigen 64 Radioprotective 105 kDa protein CD antigen CD180
<b>Function</b>	May cooperate with MD-1 and TLR4 to mediate the innate immune response to bacterial lipopolysaccharide (LPS) in B-cells. Leads to NF-kappa-B activation. Also involved in the life/death decision of B-cells .
<b>Cellular Localization</b>	Cell membrane. Single-pass type I membrane protein.

---

**St John's Laboratory Ltd**

**F** +44 (0)207 681 2580

**T** +44 (0)208 223 3081

**W** <http://www.stjohnslabs.com/>

**E** [info@stjohnslabs.com](mailto:info@stjohnslabs.com)