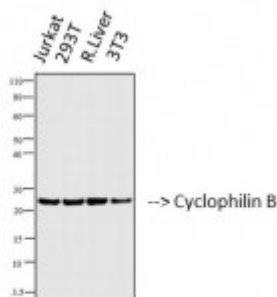


## Anti-Cyclophilin B antibody



Western Blot (WB) analysis of 1. Jurkat 2. 293T 3. Rat Liver 4. 3T3 cells using Cyclophilin B Monoclonal Antibody. (STJ97530)



### Description

Cyclophilin B is a protein encoded by the PPIB gene which is approximately 23,7 kDa. Cyclophilin B is localised to the endoplasmic reticulum lumen and melanosome. It is involved in collagen chain trimerization, degradation of the extracellular matrix and the prolactin signalling pathway. It is a cyclosporine-binding protein that binds to cells derived from T- and B-lymphocytes, and may regulate cyclosporine A-mediated immunosuppression. Cyclophilin B is expressed in the skin, nervous system, liver, lung and stomach. Mutations in the PPIB gene may result in osteogenesis imperfecta. STJ97530 was developed from clone 2B10 and was affinity-purified from mouse ascites by affinity-chromatography using specific immunogen. This primary antibody detects endogenous levels of Cyclophilin B.

<b>Model</b>	STJ97530
<b>Host</b>	Mouse
<b>Reactivity</b>	Human, Mouse, Rat
<b>Applications</b>	WB
<b>Immunogen</b>	Synthetic Peptide
<b>Gene ID</b>	<a href="#">5479</a>
<b>Gene Symbol</b>	<a href="#">PPIB</a>
<b>Dilution range</b>	WB 1:1000-2000
<b>Specificity</b>	Cyclophilin B Mouse Monoclonal Antibody (2B10) detects endogenous levels of Cyclophilin B
<b>Purification</b>	The antibody was affinity-purified from mouse ascites by affinity-

chromatography using specific immunogen.

<b>Clone ID</b>	2B10
<b>Note</b>	For Research Use Only (RUO).
<b>Protein Name</b>	Peptidyl-prolyl cis-trans isomerase B PPIase B CYP-S1 Cyclophilin B Rotamase B S-cyclophilin SCYLP
<b>Clonality</b>	Monoclonal
<b>Conjugation</b>	Unconjugated
<b>Isotype</b>	IgG1
<b>Formulation</b>	Liquid in PBS containing 50% glycerol, 0.5% BSA and 0.02% sodium azide.
<b>Concentration</b>	1 mg/ml
<b>Storage Instruction</b>	Store at -20°C, and avoid repeat freeze-thaw cycles.
<b>Database Links</b>	<a href="#">HGNC:9255OMIM:123841</a>
<b>Alternative Names</b>	Peptidyl-prolyl cis-trans isomerase B PPIase B CYP-S1 Cyclophilin B Rotamase B S-cyclophilin SCYLP
<b>Function</b>	PPIases accelerate the folding of proteins. It catalyzes the cis-trans isomerization of proline imidic peptide bonds in oligopeptides.
<b>Cellular Localization</b>	Endoplasmic reticulum lumen Melanosome. Identified by mass spectrometry in melanosome fractions from stage I to stage IV .