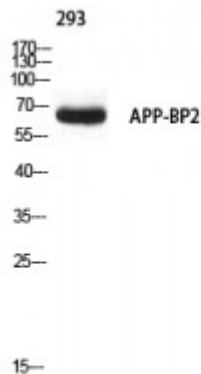


## Anti-APP-BP2 antibody



<b>Description</b>	Rabbit polyclonal to APP-BP2.
<b>Model</b>	STJ97627
<b>Host</b>	Rabbit
<b>Reactivity</b>	Human, Mouse, Rat
<b>Applications</b>	ELISA, WB
<b>Immunogen</b>	Synthesized peptide derived from human APP-BP2
<b>Immunogen Region</b>	390-470 aa, Internal
<b>Gene ID</b>	<a href="#">10513</a>
<b>Gene Symbol</b>	<a href="#">APPBP2</a>
<b>Dilution range</b>	WB 1:500-1:2000ELISA 1:10000
<b>Specificity</b>	APP-BP2 Polyclonal Antibody detects endogenous levels of APP-BP2 protein.
<b>Purification</b>	The antibody was affinity-purified from rabbit antiserum by affinity-chromatography using epitope-specific immunogen.
<b>Note</b>	For Research Use Only (RUO).
<b>Protein Name</b>	Amyloid protein-binding protein 2 Amyloid beta precursor protein-binding protein 2 APP-BP2 Protein interacting with APP tail 1
<b>Clonality</b>	Polyclonal
<b>Conjugation</b>	Unconjugated
<b>Isotype</b>	IgG

<b>Formulation</b>	Liquid in PBS containing 50% glycerol, 0.5% BSA and 0.02% sodium azide.
<b>Concentration</b>	1 mg/ml
<b>Storage Instruction</b>	Store at -20°C, and avoid repeat freeze-thaw cycles.
<b>Database Links</b>	<a href="https://www.ebi.ac.uk/ENSP/entry/HGNC:622OMIM:605324">HGNC:622OMIM:605324</a>
<b>Alternative Names</b>	Amyloid protein-binding protein 2 Amyloid beta precursor protein-binding protein 2 APP-BP2 Protein interacting with APP tail 1
<b>Function</b>	May play a role in intracellular protein transport. May be involved in the translocation of APP along microtubules toward the cell surface.
<b>Cellular Localization</b>	Nucleus. Cytoplasm, cytoskeleton. Membrane. Associated with membranes and microtubules.
<b>Post-translational Modifications</b>	Rapidly degraded by the proteasome upon overexpression of a C-terminal fragment of APP.

---

**St John's Laboratory Ltd**

**F** +44 (0)207 681 2580  
**T** +44 (0)208 223 3081

**W** <http://www.stjohnslabs.com/>  
**E** [info@stjohnslabs.com](mailto:info@stjohnslabs.com)