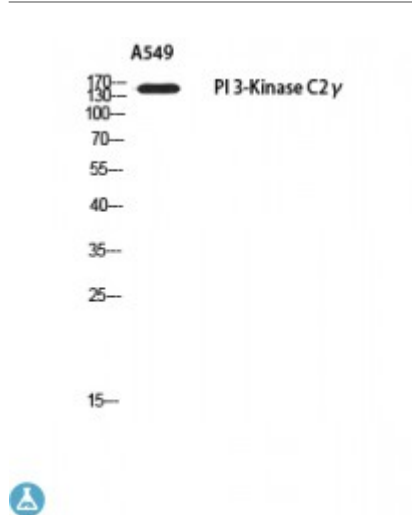


Anti-PI 3-Kinase C gamma antibody



Description	Rabbit polyclonal to PI 3-Kinase C2gamma.
Model	STJ97636
Host	Rabbit
Reactivity	Human
Applications	ELISA, WB
Immunogen	Synthesized peptide derived from human PI 3-Kinase C2gamma.
Immunogen Region	N-terminal
Gene ID	5288
Gene Symbol	PIK3C2G
Dilution range	WB 1:500-1:2000ELISA 1:10000
Specificity	PI 3-Kinase C2gamma Polyclonal Antibody detects endogenous levels of PI 3-Kinase C2gamma protein.
Tissue Specificity	Highly expressed in liver, prostate and testis. Lower levels in small intestine, kidney and pancreas.
Purification	The antibody was affinity-purified from rabbit antiserum by affinity-chromatography using epitope-specific immunogen.
Note	For Research Use Only (RUO).
Protein Name	Phosphatidylinositol 4-phosphate 3-kinase C2 domain-containing subunit gamma PI3K-C2-gamma PtdIns-3-kinase C2 subunit gamma Phosphoinositide 3-kinase-C2-gamma

Clonality	Polyclonal
Conjugation	Unconjugated
Isotype	IgG
Formulation	Liquid in PBS containing 50% glycerol, 0.5% BSA and 0.02% sodium azide.
Concentration	1 mg/ml
Storage Instruction	Store at -20°C, and avoid repeat freeze-thaw cycles.
Database Links	HGNC:8973OMIM:609001
Alternative Names	Phosphatidylinositol 4-phosphate 3-kinase C2 domain-containing subunit gamma PI3K-C2-gamma PtdIns-3-kinase C2 subunit gamma Phosphoinositide 3-kinase-C2-gamma
Function	Generates phosphatidylinositol 3-phosphate (PtdIns3P) and phosphatidylinositol 3,4-bisphosphate (PtdIns(3,4)P2) that act as second messengers. May play a role in SDF1A-stimulated chemotaxis .
Cellular Localization	Membrane

St John's Laboratory Ltd

F +44 (0)207 681 2580
T +44 (0)208 223 3081

W <http://www.stjohnslabs.com/>
E info@stjohnslabs.com