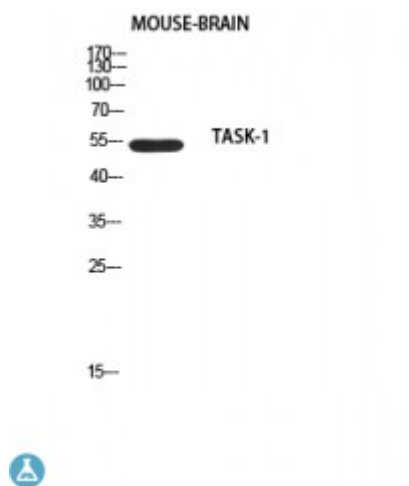


Anti-TASK-1 antibody



Description	Rabbit polyclonal to TASK-1.
Model	STJ97642
Host	Rabbit
Reactivity	Human, Mouse, Rat
Applications	ELISA, WB
Immunogen	Synthesized peptide derived from human TASK-1.
Immunogen Region	N-terminal
Gene ID	3777
Gene Symbol	KCNK3
Dilution range	WB 1:500-1:2000ELISA 1:10000
Specificity	TASK-1 Polyclonal Antibody detects endogenous levels of TASK-1 protein.
Tissue Specificity	Widespread expression in adult. Strongest expression in pancreas and placenta. Lower expression in brain, lung, prostate, heart, kidney, uterus, small intestine and colon.
Purification	The antibody was affinity-purified from rabbit antiserum by affinity-chromatography using epitope-specific immunogen.
Note	For Research Use Only (RUO).
Protein Name	Potassium channel subfamily K member 3 Acid-sensitive potassium channel protein TASK-1 TWIK-related acid-sensitive K + channel 1 Two pore potassium channel KT3.1 Two pore K + channel KT3.1

Clonality	Polyclonal
Conjugation	Unconjugated
Isotype	IgG
Formulation	Liquid in PBS containing 50% glycerol, 0.5% BSA and 0.02% sodium azide.
Concentration	1 mg/ml
Storage Instruction	Store at -20°C, and avoid repeat freeze-thaw cycles.
Database Links	HGNC:6278OMIM:603220
Alternative Names	Potassium channel subfamily K member 3 Acid-sensitive potassium channel protein TASK-1 TWIK-related acid-sensitive K + channel 1 Two pore potassium channel KT3.1 Two pore K + channel KT3.1
Function	pH-dependent, voltage-insensitive, background potassium channel protein. Rectification direction results from potassium ion concentration on either side of the membrane. Acts as an outward rectifier when external potassium concentration is low. When external potassium concentration is high, current is inward.
Cellular Localization	Cell membrane

St John's Laboratory Ltd

F +44 (0)207 681 2580

T +44 (0)208 223 3081

W <http://www.stjohnslabs.com/>

E info@stjohnslabs.com