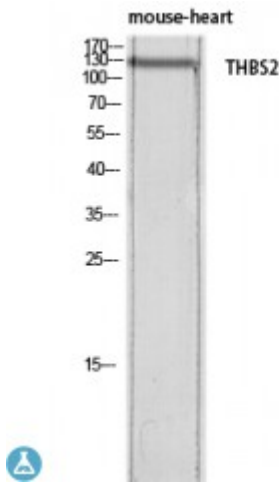


Anti-Thrombospondin 2 antibody



Description

Rabbit polyclonal to Thrombospondin 2.

Model

STJ97651

Host

Rabbit

Reactivity

Human, Mouse, Rat

Applications

ELISA, IHC, WB

Immunogen

Synthesized peptide derived from human Thrombospondin 2.

Immunogen Region

C-terminal

Gene ID

[7058](#)

Gene Symbol

[THBS2](#)

Dilution range

WB 1:500-1:2000IHC-P 1:100-1:300ELISA 1:10000

Specificity

Thrombospondin 2 Polyclonal Antibody detects endogenous levels of Thrombospondin 2 protein.

Tissue Specificity

High expression in vertebral disk tissue.

Purification

The antibody was affinity-purified from rabbit antiserum by affinity-chromatography using epitope-specific immunogen.

Note

For Research Use Only (RUO).

Protein Name

Thrombospondin-2

Clonality

Polyclonal

Conjugation

Unconjugated

Isotype	IgG
Formulation	Liquid in PBS containing 50% glycerol, 0.5% BSA and 0.02% sodium azide.
Concentration	1 mg/ml
Storage Instruction	Store at -20°C, and avoid repeat freeze-thaw cycles.
Database Links	HGNC:11786OMIM:188061
Alternative Names	Thrombospondin-2
Function	Adhesive glycoprotein that mediates cell-to-cell and cell-to-matrix interactions. Ligand for CD36 mediating antiangiogenic properties.

St John's Laboratory Ltd

F +44 (0)207 681 2580

T +44 (0)208 223 3081

W <http://www.stjohnslabs.com/>

E info@stjohnslabs.com