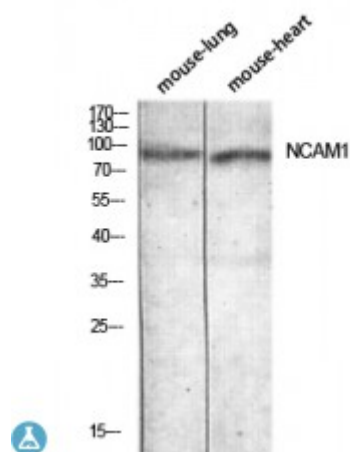


Anti-CD56 antibody



Description	Rabbit polyclonal to CD56.
Model	STJ97661
Host	Rabbit
Reactivity	Human
Applications	ELISA, IHC, WB
Immunogen	Synthesized peptide derived from human CD56.
Immunogen Region	Internal
Gene ID	4684
Gene Symbol	NCAM1
Dilution range	WB 1:500-1:2000IHC-P 1:100-1:300ELISA 1:10000
Specificity	CD56 Polyclonal Antibody detects endogenous levels of CD56 protein.
Purification	The antibody was affinity-purified from rabbit antiserum by affinity-chromatography using epitope-specific immunogen.
Note	For Research Use Only (RUO).
Protein Name	Neural cell adhesion molecule 1 N-CAM-1 NCAM-1 CD antigen CD56
Clonality	Polyclonal
Conjugation	Unconjugated
Isotype	IgG
Formulation	Liquid in PBS containing 50% glycerol, 0.5% BSA and 0.02% sodium azide.

Concentration	1 mg/ml
Storage Instruction	Store at -20°C, and avoid repeat freeze-thaw cycles.
Database Links	HGNC:7656OMIM:116930
Alternative Names	Neural cell adhesion molecule 1 N-CAM-1 NCAM-1 CD antigen CD56
Function	This protein is a cell adhesion molecule involved in neuron-neuron adhesion, neurite fasciculation, outgrowth of neurites, etc.; (Microbial infection) Acts as a receptor for rabies virus.
Cellular Localization	Isoform 1: Cell membrane. Single-pass type I membrane protein.. Isoform 2: Cell membrane. Single-pass type I membrane protein.. Isoform 3: Cell membrane. Lipid-anchor, GPI-anchor.. Isoform 4: Cell membrane Isoform 5: Secreted.. Isoform 6: Secreted

St John's Laboratory Ltd

F +44 (0)207 681 2580

T +44 (0)208 223 3081

W <http://www.stjohnslabs.com/>

E info@stjohnslabs.com