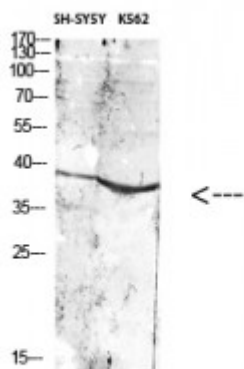


Anti-CD296 antibody



Description	Rabbit polyclonal to CD296.
Model	STJ97670
Host	Rabbit
Reactivity	Human
Applications	ELISA, WB
Immunogen	Synthesized peptide derived from human CD296.
Immunogen Region	51-100 aa, Internal
Gene ID	417
Gene Symbol	ART1
Dilution range	WB 1:500-1:2000ELISA 1:10000
Specificity	CD296 Polyclonal Antibody detects endogenous levels of CD296 protein.
Purification	The antibody was affinity-purified from rabbit antiserum by affinity-chromatography using epitope-specific immunogen.
Note	For Research Use Only (RUO).
Protein Name	GPI-linked NAD P +---arginine ADP-ribosyltransferase 1 ADP-ribosyltransferase C2 and C3 toxin-like 1 ARTC1 Mono ADP-ribosyltransferase 1 CD antigen CD296
Clonality	Polyclonal
Conjugation	Unconjugated
Isotype	IgG

Formulation	Liquid in PBS containing 50% glycerol, 0.5% BSA and 0.02% sodium azide.
Concentration	1 mg/ml
Storage Instruction	Store at -20°C, and avoid repeat freeze-thaw cycles.
Database Links	HGNC:723OMIM:601625
Alternative Names	GPI-linked NAD P +--arginine ADP-ribosyltransferase 1 ADP-ribosyltransferase C2 and C3 toxin-like 1 ARTC1 Mono ADP-ribosyltransferase 1 CD antigen CD296
Function	Has ADP-ribosyltransferase activity toward GLP1R.
Cellular Localization	Sarcoplasmic reticulum membrane. Lipid-anchor, GPI-anchor.

St John's Laboratory Ltd

F +44 (0)207 681 2580
T +44 (0)208 223 3081

W <http://www.stjohnslabs.com/>
E info@stjohnslabs.com