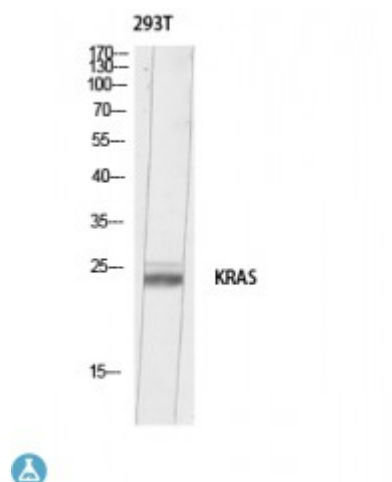


## Anti-K-Ras antibody



<b>Description</b>	Rabbit polyclonal to K-Ras.
<b>Model</b>	STJ97704
<b>Host</b>	Rabbit
<b>Reactivity</b>	Human, Mouse, Rat
<b>Applications</b>	ELISA, WB
<b>Immunogen</b>	Synthesized peptide derived from human KRAS
<b>Immunogen Region</b>	C-terminal
<b>Gene ID</b>	<a href="#">3845</a>
<b>Gene Symbol</b>	<a href="#">KRAS</a>
<b>Dilution range</b>	WB 1:500-1:2000ELISA 1:10000
<b>Specificity</b>	K-Ras Polyclonal Antibody detects endogenous levels of v-Ki-ras2 Kirsten rat sarcoma viral oncogene homolog
<b>Purification</b>	The antibody was affinity-purified from rabbit antiserum by affinity-chromatography using epitope-specific immunogen.
<b>Note</b>	For Research Use Only (RUO).
<b>Protein Name</b>	GTPase KRas K-Ras 2 Ki-Ras c-K-ras c-Ki-ras GTPase KRas, N-terminally processed
<b>Clonality</b>	Polyclonal
<b>Conjugation</b>	Unconjugated
<b>Isotype</b>	IgG

<b>Formulation</b>	Liquid in PBS containing 50% glycerol, 0.5% BSA and 0.02% sodium azide.
<b>Concentration</b>	1 mg/ml
<b>Storage Instruction</b>	Store at -20°C, and avoid repeat freeze-thaw cycles.
<b>Database Links</b>	<a href="https://www.ncbi.nlm.nih.gov/omim/64070">HGNC:64070MIM:190070</a>
<b>Alternative Names</b>	GTPase KRas K-Ras 2 Ki-Ras c-K-ras c-Ki-ras GTPase KRas, N-terminally processed
<b>Function</b>	Ras proteins bind GDP/GTP and possess intrinsic GTPase activity. Plays an important role in the regulation of cell proliferation . Plays a role in promoting oncogenic events by inducing transcriptional silencing of tumor suppressor genes (TSGs) in colorectal cancer (CRC) cells in a ZNF304-dependent manner .
<b>Cellular Localization</b>	Cell membrane Cytoplasm, cytosol
<b>Post-translational Modifications</b>	Acetylation at Lys-104 prevents interaction with guanine nucleotide exchange factors (GEFs).

---

**St John's Laboratory Ltd**

**F** +44 (0)207 681 2580

**T** +44 (0)208 223 3081

**W** <http://www.stjohnslabs.com/>

**E** [info@stjohnslabs.com](mailto:info@stjohnslabs.com)