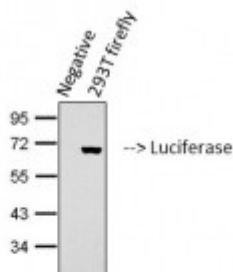


## Anti-Luciferase antibody



Western Blot (WB) analysis of 293T transfected firefly cells using Luciferase Mouse Monoclonal Antibody(6B8). (STJ97752)



### Description

Luciferase or Luciferin 4-monooxygenase is a protein encoded by the luc gene which is produced in *Photinus pyralis* or the common eastern firefly. Luciferase is localised to the peroxisome and is involved in chaperone binding. This protein falls under the ATP-dependent AMP-binding enzyme family and is one of the most extensively studied of the enzymes that catalyse light production in bioluminescent organisms and requires ATP and O<sub>2</sub> as substrates. There are two reactions catalysed by luciferase, the first being the formation of an enzyme-bound luciferyl-adenylate and a second in which the luciferyl-adenylate undergoes an oxidative decarboxylation which results in the production of CO<sub>2</sub>, oxyluciferin, AMP, and green light with a wavelength of 562 nm. STJ97752 was developed from clone 6B8 and was affinity-purified from mouse ascites by affinity-chromatography using specific immunogen. This primary antibody detects endogenous levels of Luciferase.

<b>Model</b>	STJ97752
<b>Host</b>	Mouse
<b>Reactivity</b>	Drosophila
<b>Applications</b>	IHC, WB
<b>Immunogen</b>	Recombinant peptide derived from Luciferase
<b>Dilution range</b>	WB 1:1000-2000 IHC 1:100-200
<b>Specificity</b>	Luciferase Mouse Monoclonal Antibody (6B8) detects endogenous levels of Luciferase
<b>Purification</b>	The antibody was affinity-purified from mouse ascites by affinity-chromatography using specific immunogen.

<b>Clone ID</b>	6B8
<b>Note</b>	For Research Use Only (RUO).
<b>Protein Name</b>	Luciferin 4-monooxygenase Luciferase
<b>Clonality</b>	Monoclonal
<b>Conjugation</b>	Unconjugated
<b>Isotype</b>	IgG1
<b>Formulation</b>	Liquid in PBS containing 50% glycerol, 0.5% BSA and 0.02% sodium azide.
<b>Concentration</b>	1 mg/ml
<b>Storage Instruction</b>	Store at -20°C, and avoid repeat freeze-thaw cycles.
<b>Alternative Names</b>	Luciferin 4-monooxygenase Luciferase

---

**St John's Laboratory Ltd**

**F** +44 (0)207 681 2580

**T** +44 (0)208 223 3081

**W** <http://www.stjohnslabs.com/>

**E** [info@stjohnslabs.com](mailto:info@stjohnslabs.com)