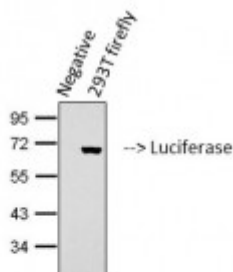


Anti-Luciferase antibody



Western Blot (WB) analysis of 293T transfected firefly cells using Luciferase Mouse Monoclonal Antibody(6B8). (STJ97752)



Description

Luciferase or Luciferin 4-monooxygenase is a protein encoded by the luc gene which is produced in *Photinus pyralis* or the common eastern firefly. Luciferase is localised to the peroxisome and is involved in chaperone binding. This protein falls under the ATP-dependent AMP-binding enzyme family and is one of the most extensively studied of the enzymes that catalyse light production in bioluminescent organisms and requires ATP and O₂ as substrates. There are two reactions catalysed by luciferase, the first being the formation of an enzyme-bound luciferyl-adenylate and a second in which the luciferyl-adenylate undergoes an oxidative decarboxylation which results in the production of CO₂, oxyluciferin, AMP, and green light with a wavelength of 562 nm. STJ97752 was developed from clone 6B8 and was affinity-purified from mouse ascites by affinity-chromatography using specific immunogen. This primary antibody detects endogenous levels of Luciferase.

Model	STJ97752
Host	Mouse
Reactivity	Drosophila
Applications	IHC, WB
Immunogen	Recombinant peptide derived from Luciferase
Dilution range	WB 1:1000-2000 IHC 1:100-200
Specificity	Luciferase Mouse Monoclonal Antibody (6B8) detects endogenous levels of Luciferase
Purification	The antibody was affinity-purified from mouse ascites by affinity-chromatography using specific immunogen.

Clone ID	6B8
Note	For Research Use Only (RUO).
Protein Name	Luciferin 4-monooxygenase Luciferase
Clonality	Monoclonal
Conjugation	Unconjugated
Isotype	IgG1
Formulation	Liquid in PBS containing 50% glycerol, 0.5% BSA and 0.02% sodium azide.
Concentration	1 mg/ml
Storage Instruction	Store at -20°C, and avoid repeat freeze-thaw cycles.
Alternative Names	Luciferin 4-monooxygenase Luciferase

St John's Laboratory Ltd

F +44 (0)207 681 2580

T +44 (0)208 223 3081

W <http://www.stjohnslabs.com/>

E info@stjohnslabs.com