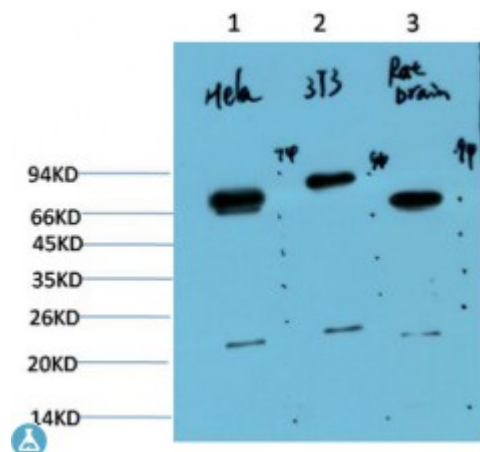


## Anti-Ubiquitin antibody



<b>Description</b>	Mouse monoclonal to Ubiquitin.
<b>Model</b>	STJ97753
<b>Host</b>	Mouse
<b>Reactivity</b>	Human, Mouse, Rat
<b>Applications</b>	IHC, WB
<b>Immunogen</b>	synthetic peptide derived from Ubiquitin
<b>Dilution range</b>	WB 1:1000-2000IHC 1:100-200
<b>Specificity</b>	Ubiquitin Mouse Monoclonal Antibody (6G6) detects endogenous levels of Ubiquitin
<b>Purification</b>	The antibody was affinity-purified from mouse ascites by affinity-chromatography using specific immunogen.
<b>Clone ID</b>	6G6
<b>Note</b>	For Research Use Only (RUO).
<b>Protein Name</b>	Polyubiquitin-B Ubiquitin
<b>Clonality</b>	Monoclonal
<b>Conjugation</b>	Unconjugated
<b>Isotype</b>	IgG1
<b>Formulation</b>	Liquid in PBS containing 50% glycerol, 0.5% BSA and 0.02% sodium azide.
<b>Concentration</b>	1 mg/ml

**Storage Instruction**

Store at -20°C, and avoid repeat freeze-thaw cycles.

**Alternative Names**

Polyubiquitin-B Ubiquitin

---

**St John's Laboratory Ltd****F** +44 (0)207 681 2580**T** +44 (0)208 223 3081**W** <http://www.stjohnslabs.com/>**E** [info@stjohnslabs.com](mailto:info@stjohnslabs.com)