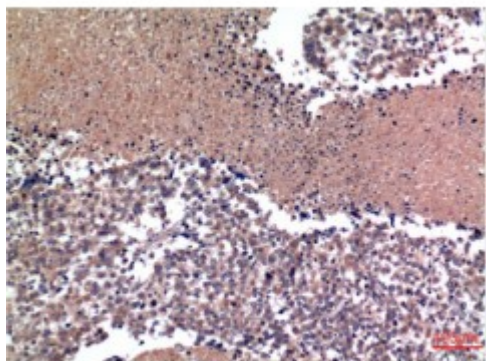


Anti-Cyclin B1 antibody



Description	Mouse monoclonal to Cyclin B1.
Model	STJ97756
Host	Mouse
Reactivity	Human, Mouse, Rat
Applications	IHC
Immunogen	synthetic peptide derived from Cyclin B1
Immunogen Region	60-140 aa
Gene ID	891
Gene Symbol	CCNB1
Dilution range	IHC 1:100-200
Specificity	Cyclin B1 Mouse Monoclonal Antibody (1A5) detects endogenous levels of CCNB1
Purification	The antibody was affinity-purified from mouse ascites by affinity-chromatography using specific immunogen.
Clone ID	1A5
Note	For Research Use Only (RUO).
Protein Name	G2/mitotic-specific cyclin-B1
Clonality	Monoclonal
Conjugation	Unconjugated

Isotype	IgG1
Formulation	Liquid in PBS containing 50% glycerol, 0.5% BSA and 0.02% sodium azide.
Concentration	1 mg/ml
Storage Instruction	Store at -20°C, and avoid repeat freeze-thaw cycles.
Database Links	HGNC:15790MIM:123836
Alternative Names	G2/mitotic-specific cyclin-B1
Function	Essential for the control of the cell cycle at the G2/M (mitosis) transition.
Cellular Localization	Cytoplasm. Nucleus. Cytoplasm, cytoskeleton, microtubule organizing center, centrosome.
Post-translational Modifications	Ubiquitinated by the SCF(NIPa) complex during interphase, leading to its destruction. Not ubiquitinated during G2/M phases. Phosphorylated by PLK1 at Ser-133 on centrosomes during prophase: phosphorylation by PLK1 does not cause nuclear import. Phosphorylation at Ser-147 was also reported to be mediated by PLK1 but Ser-133 seems to be the primary phosphorylation site.

St John's Laboratory Ltd

F +44 (0)207 681 2580

T +44 (0)208 223 3081

W <http://www.stjohnslabs.com/>

E info@stjohnslabs.com