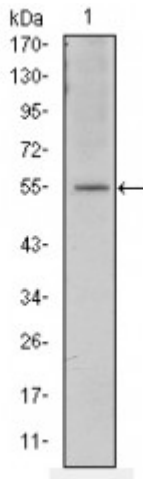


## Anti-ATF-2 antibody



<b>Description</b>	Mouse monoclonal to ATF-2.
--------------------	----------------------------

<b>Model</b>	STJ97854
<b>Host</b>	Mouse
<b>Reactivity</b>	Human, Mouse
<b>Applications</b>	ELISA, IHC, WB
<b>Immunogen</b>	Purified recombinant fragment of human ATF-2 expressed in E. Coli.
<b>Gene ID</b>	<a href="#">1386</a>
<b>Gene Symbol</b>	<a href="#">ATF2</a>
<b>Dilution range</b>	WB 1:500-1:2000IHC 1:200-1:1000ELISA 1:10000
<b>Specificity</b>	ATF-2 Monoclonal Antibody detects endogenous levels of ATF-2 protein.
<b>Tissue Specificity</b>	Ubiquitously expressed, with more abundant expression in the brain.
<b>Purification</b>	Affinity purification
<b>Clone ID</b>	4F12
<b>Note</b>	For Research Use Only (RUO).
<b>Protein Name</b>	Cyclic AMP-dependent transcription factor ATF-2 cAMP-dependent transcription factor ATF-2 Activating transcription factor 2 Cyclic AMP-responsive element-binding protein 2 CREB-2 cAMP-responsive element-binding protein 2