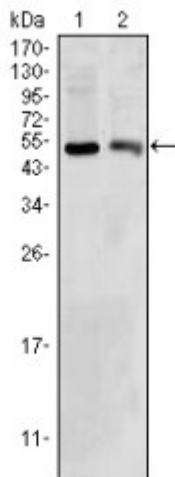


## Anti-BDH1 antibody



<b>Description</b>	Mouse monoclonal to BDH1.
--------------------	---------------------------

<b>Model</b>	STJ97861
<b>Host</b>	Mouse
<b>Reactivity</b>	Human, Mouse
<b>Applications</b>	ELISA, IHC, WB
<b>Immunogen</b>	Purified recombinant fragment of human BDH1 expressed in E. Coli.
<b>Gene ID</b>	<a href="#">622</a>
<b>Gene Symbol</b>	<a href="#">BDH1</a>
<b>Dilution range</b>	WB 1:500-1:2000IHC 1:200-1:1000ELISA 1:10000
<b>Specificity</b>	BDH1 Monoclonal Antibody detects endogenous levels of BDH1 protein.
<b>Purification</b>	Affinity purification
<b>Clone ID</b>	1A5
<b>Note</b>	For Research Use Only (RUO).
<b>Protein Name</b>	D-beta-hydroxybutyrate dehydrogenase, mitochondrial 3-hydroxybutyrate dehydrogenase BDH Short chain dehydrogenase/reductase family 9C member 1
<b>Clonality</b>	Monoclonal
<b>Conjugation</b>	Unconjugated
<b>Isotype</b>	IgG1

<b>Formulation</b>	Ascitic fluid containing 0.03% sodium azide.
<b>Storage Instruction</b>	Store at -20°C, and avoid repeat freeze-thaw cycles.
<b>Database Links</b>	<a href="#">HGNC:1027OMIM:603063</a>
<b>Alternative Names</b>	D-beta-hydroxybutyrate dehydrogenase, mitochondrial 3-hydroxybutyrate dehydrogenase BDH Short chain dehydrogenase/reductase family 9C member 1
<b>Cellular Localization</b>	Mitochondrion inner membrane Mitochondrion matrix

---

**St John's Laboratory Ltd**

**F** +44 (0)207 681 2580

**T** +44 (0)208 223 3081

**W** <http://www.stjohnslabs.com/>

**E** [info@stjohnslabs.com](mailto:info@stjohnslabs.com)