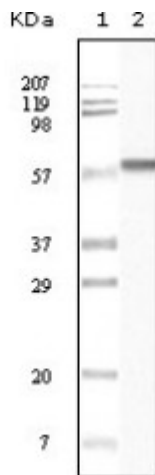


## Anti-Casein Kinase alpha antibody



<b>Description</b>	Mouse monoclonal to Casein Kinase Ialpha.
<b>Model</b>	STJ97894
<b>Host</b>	Mouse
<b>Reactivity</b>	Human
<b>Applications</b>	ELISA, IHC, WB
<b>Immunogen</b>	Purified recombinant fragment of Casein Kinase Ialpha expressed in E. Coli.
<b>Gene ID</b>	<a href="#">1452</a>
<b>Gene Symbol</b>	<a href="#">CSNK1A1</a>
<b>Dilution range</b>	WB 1:500-1:2000IHC 1:200-1:1000ELISA 1:10000
<b>Specificity</b>	Casein Kinase Ialpha Monoclonal Antibody detects endogenous levels of Casein Kinase Ialpha protein.
<b>Purification</b>	Affinity purification
<b>Clone ID</b>	3C10F7 / 3C10G5 / PMC01 / 4D12B3 / 3C10F7C11
<b>Note</b>	For Research Use Only (RUO).
<b>Protein Name</b>	Casein kinase I isoform alpha CKI-alpha CK1
<b>Clonality</b>	Monoclonal
<b>Conjugation</b>	Unconjugated
<b>Isotype</b>	IgG1
<b>Formulation</b>	Ascitic fluid containing 0.03% sodium azide.

<b>Storage Instruction</b>	Store at -20°C, and avoid repeat freeze-thaw cycles.
<b>Database Links</b>	<a href="#">HGNC:2451OMIM:600505</a>
<b>Alternative Names</b>	Casein kinase I isoform alpha CKI-alpha CK1
<b>Function</b>	Casein kinases are operationally defined by their preferential utilization of acidic proteins such as caseins as substrates. It can phosphorylate a large number of proteins. Participates in Wnt signaling. Phosphorylates CTNNB1 at 'Ser-45'. May phosphorylate PER1 and PER2. May play a role in segregating chromosomes during mitosis . May play a role in keratin cytoskeleton disassembly and thereby, it may regulate epithelial cell migration .
<b>Cellular Localization</b>	Cytoplasm Cytoplasm, cytoskeleton, microtubule organizing center, centrosome Chromosome, centromere, kinetochore Nucleus speckle Cytoplasm, cytoskeleton, cilium basal body. Localizes to the centrosome in interphase cells, and to kinetochore fibers during mitosis. Also recruited to the keratin cytoskeleton .

---

**St John's Laboratory Ltd**

**F** +44 (0)207 681 2580

**T** +44 (0)208 223 3081

**W** <http://www.stjohnslabs.com/>

**E** [info@stjohnslabs.com](mailto:info@stjohnslabs.com)