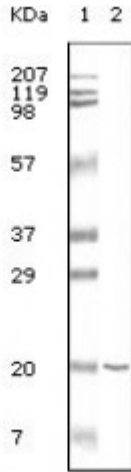


Anti-CD19 antibody



Description	Mouse monoclonal to CD19.
Model	STJ97910
Host	Mouse
Reactivity	Human
Applications	ELISA, IHC, WB
Immunogen	Purified recombinant fragment of human CD19 expressed in E. Coli.
Gene ID	930
Gene Symbol	CD19
Dilution range	WB 1:500-1:2000IHC 1:200-1:1000ELISA 1:10000
Specificity	CD19 Monoclonal Antibody detects endogenous levels of CD19 protein.
Purification	Affinity purification
Clone ID	2E2B6B10
Note	For Research Use Only (RUO).
Protein Name	B-lymphocyte antigen CD19 B-lymphocyte surface antigen B4 Differentiation antigen CD19 T-cell surface antigen Leu-12 CD antigen CD19
Clonality	Monoclonal
Conjugation	Unconjugated
Isotype	IgG2a
Formulation	Purified antibody in PBS containing 0.03% sodium azide.

Concentration	1 mg/ml
Storage Instruction	Store at -20°C, and avoid repeat freeze-thaw cycles.
Database Links	HGNC:1633OMIM:107265
Alternative Names	B-lymphocyte antigen CD19 B-lymphocyte surface antigen B4 Differentiation antigen CD19 T-cell surface antigen Leu-12 CD antigen CD19
Function	Assembles with the antigen receptor of B-lymphocytes in order to decrease the threshold for antigen receptor-dependent stimulation.
Cellular Localization	Membrane. Single-pass type I membrane protein.
Post-translational Modifications	Phosphorylated on serine and threonine upon DNA damage, probably by ATM or ATR. Phosphorylated on tyrosine following B-cell activation. Phosphorylated on tyrosine residues by LYN.

St John's Laboratory Ltd

F +44 (0)207 681 2580

T +44 (0)208 223 3081

W <http://www.stjohnslabs.com/>

E info@stjohnslabs.com