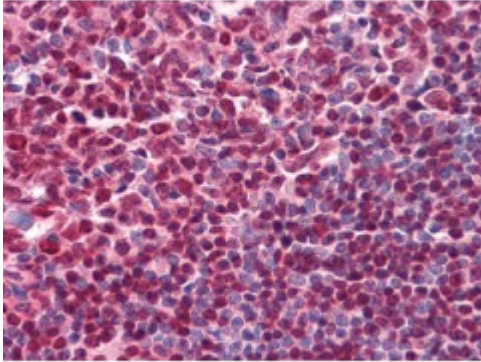


Anti-CD20 antibody (KLH)



Description	Mouse monoclonal to CD20 (KLH).
Model	STJ97914
Host	Mouse
Reactivity	Human
Applications	ELISA, IF, IHC
Immunogen	Synthesized peptide derived from human CD20, conjugated to KLH.
Gene ID	931
Gene Symbol	MS4A1
Dilution range	IHC 1:200-1:1000IF 1:200-1:1000ELISA 1:10000
Specificity	CD20 Monoclonal Antibody detects endogenous levels of CD20 protein.
Tissue Specificity	Expressed on B-cells.
Purification	Affinity purification
Clone ID	3E9D3C1G3
Note	For Research Use Only (RUO).
Protein Name	B-lymphocyte antigen CD20 B-lymphocyte surface antigen B1 Bp35 Leukocyte surface antigen Leu-16 Membrane-spanning 4-domains subfamily A member 1 CD antigen CD20
Clonality	Monoclonal
Conjugation	KLH

Formulation	Ascitic fluid containing 0.03% sodium azide.
Storage Instruction	Store at -20°C, and avoid repeat freeze-thaw cycles.
Database Links	HGNC:7315OMIM:112210
Alternative Names	B-lymphocyte antigen CD20 B-lymphocyte surface antigen B1 Bp35 Leukocyte surface antigen Leu-16 Membrane-spanning 4-domains subfamily A member 1 CD antigen CD20
Function	This protein may be involved in the regulation of B-cell activation and proliferation.
Cellular Localization	Cell membrane Cell membrane
Post-translational Modifications	Phosphorylated. Might be functionally regulated by protein kinase(s).

St John's Laboratory Ltd

F +44 (0)207 681 2580

T +44 (0)208 223 3081

W <http://www.stjohnslabs.com/>

E info@stjohnslabs.com