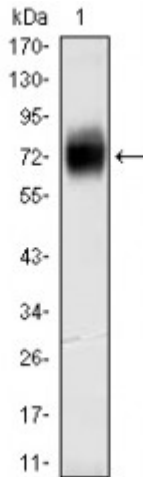


Anti-CD38 antibody



Description	Mouse monoclonal to CD38.
Model	STJ97924
Host	Mouse
Reactivity	Human
Applications	ELISA, IHC, WB
Immunogen	Purified recombinant fragment of human CD38 expressed in E. Coli.
Gene ID	952
Gene Symbol	CD38
Dilution range	WB 1:500-1:2000IHC 1:200-1:1000ELISA 1:10000
Specificity	CD38 Monoclonal Antibody detects endogenous levels of CD38 protein.
Tissue Specificity	Expressed at high levels in pancreas, liver, kidney, brain, testis, ovary, placenta, malignant lymphoma and neuroblastoma.
Purification	Affinity purification
Clone ID	6E12D
Note	For Research Use Only (RUO).
Protein Name	ADP-ribosyl cyclase/cyclic ADP-ribose hydrolase 1 2'-phospho-ADP-ribosyl cyclase 2'-phospho-ADP-ribosyl cyclase/2'-phospho-cyclic-ADP-ribose transferase 2'-phospho-cyclic-ADP-ribose transferase ADP-ribosyl cyclase 1 ADPRC 1 <
Clonality	Monoclonal

Conjugation	Unconjugated
Isotype	IgG1
Formulation	Ascitic fluid containing 0.03% sodium azide.
Storage Instruction	Store at -20°C, and avoid repeat freeze-thaw cycles.
Database Links	HGNC:1667OMIM:107270
Alternative Names	ADP-ribosyl cyclase/cyclic ADP-ribose hydrolase 1 2'-phospho-ADP-ribosyl cyclase 2'-phospho-ADP-ribosyl cyclase/2'-phospho-cyclic-ADP-ribose transferase 2'-phospho-cyclic-ADP-ribose transferase ADP-ribosyl cyclase 1 ADPRC 1 <
Function	Synthesizes the second messengers cyclic ADP-ribose and nicotinate-adenine dinucleotide phosphate, the former a second messenger for glucose-induced insulin secretion. Also has cADPr hydrolase activity. Also moonlights as a receptor in cells of the immune system.
Cellular Localization	Membrane. Single-pass type II membrane protein.

St John's Laboratory Ltd

F +44 (0)207 681 2580

T +44 (0)208 223 3081

W <http://www.stjohnslabs.com/>

E info@stjohnslabs.com