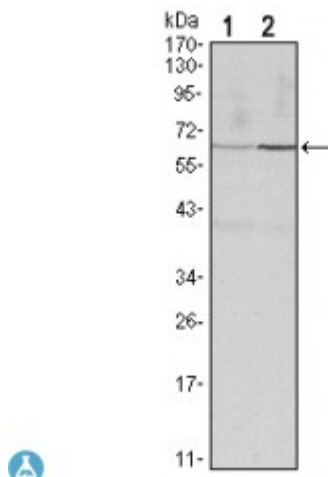


Anti-Cyclin B1 antibody



Description	Mouse monoclonal to Cyclin B1.
Model	STJ97977
Host	Mouse
Reactivity	Human, Rat
Applications	ELISA, FC, IF, WB
Immunogen	Purified recombinant fragment of human Cyclin B1 expressed in E. Coli.
Gene ID	891
Gene Symbol	CCNB1
Dilution range	WB 1:500-1:2000IF 1:200-1:1000FC 1:200-1:400ELISA 1:10000
Specificity	Cyclin B1 Monoclonal Antibody detects endogenous levels of Cyclin B1 protein.
Purification	Affinity purification
Clone ID	5G6
Note	For Research Use Only (RUO).
Protein Name	G2/mitotic-specific cyclin-B1
Clonality	Monoclonal
Conjugation	Unconjugated
Isotype	IgG1
Formulation	Ascitic fluid containing 0.03% sodium azide.

Storage Instruction	Store at -20°C, and avoid repeat freeze-thaw cycles.
Database Links	HGNC:15790MIM:123836
Alternative Names	G2/mitotic-specific cyclin-B1
Function	Essential for the control of the cell cycle at the G2/M (mitosis) transition.
Cellular Localization	Cytoplasm. Nucleus. Cytoplasm, cytoskeleton, microtubule organizing center, centrosome.
Post-translational Modifications	Ubiquitinated by the SCF(NIPA) complex during interphase, leading to its destruction. Not ubiquitinated during G2/M phases. Phosphorylated by PLK1 at Ser-133 on centrosomes during prophase: phosphorylation by PLK1 does not cause nuclear import. Phosphorylation at Ser-147 was also reported to be mediated by PLK1 but Ser-133 seems to be the primary phosphorylation site.

St John's Laboratory Ltd

F +44 (0)207 681 2580

T +44 (0)208 223 3081

W <http://www.stjohnslabs.com/>

E info@stjohnslabs.com