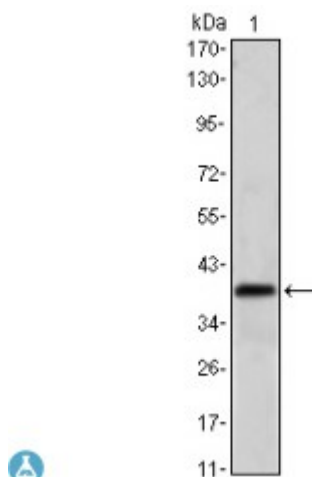


## Anti-Msi1 antibody



<b>Description</b>	Mouse monoclonal to Msi1.
<b>Model</b>	STJ98253
<b>Host</b>	Mouse
<b>Reactivity</b>	Human
<b>Applications</b>	ELISA, FC, WB
<b>Immunogen</b>	Purified recombinant fragment of human Msi1 expressed in E. Coli.
<b>Gene ID</b>	<a href="#">4440</a>
<b>Gene Symbol</b>	<a href="#">MSI1</a>
<b>Dilution range</b>	WB 1:500-1:2000FC 1:200-1:400ELISA 1:10000
<b>Specificity</b>	Msi1 Monoclonal Antibody detects endogenous levels of Msi1 protein.
<b>Tissue Specificity</b>	Detected in fetal kidney, brain, liver and lung, and in adult brain and pancreas. Detected in hepatoma cell lines.
<b>Purification</b>	Affinity purification
<b>Clone ID</b>	2A12
<b>Note</b>	For Research Use Only (RUO).
<b>Protein Name</b>	RNA-binding protein Musashi homolog 1 Musashi-1
<b>Clonality</b>	Monoclonal
<b>Conjugation</b>	Unconjugated
<b>Isotype</b>	IgG1

<b>Formulation</b>	Ascitic fluid containing 0.03% sodium azide.
<b>Storage Instruction</b>	Store at -20°C, and avoid repeat freeze-thaw cycles.
<b>Database Links</b>	<a href="https://www.ncbi.nlm.nih.gov/ncbiinfo/condensed/condensed.html?term=HGNC:7330OMIM:603328">HGNC:7330OMIM:603328</a>
<b>Alternative Names</b>	RNA-binding protein Musashi homolog 1 Musashi-1
<b>Function</b>	RNA binding protein that regulates the expression of target mRNAs at the translation level. Regulates expression of the NOTCH1 antagonist NUMB. Binds RNA containing the sequence 5'-GUUAGUUAGUUAGUU-3' and other sequences containing the pattern 5'-[GA]U(1-3)AGU-3'. May play a role in the proliferation and maintenance of stem cells in the central nervous system .
<b>Sequence and Domain Family</b>	The first RNA recognition motif binds more strongly to RNA compared to the second one.
<b>Cellular Localization</b>	Cytoplasm Nucleus

---

**St John's Laboratory Ltd**

**F** +44 (0)207 681 2580

**T** +44 (0)208 223 3081

**W** <http://www.stjohnslabs.com/>

**E** [info@stjohnslabs.com](mailto:info@stjohnslabs.com)