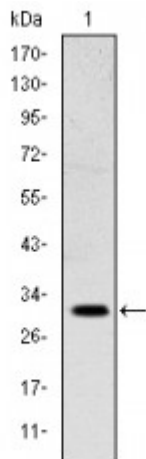


Anti-Msx-1 antibody



Description	Mouse monoclonal to Msx-1.
Model	STJ98255
Host	Mouse
Reactivity	Human
Applications	ELISA, WB
Immunogen	Purified recombinant fragment of human Msx-1 expressed in E. Coli.
Gene ID	4487
Gene Symbol	MSX1
Dilution range	WB 1:500-1:2000ELISA 1:10000
Specificity	Msx-1 Monoclonal Antibody detects endogenous levels of Msx-1 protein.
Tissue Specificity	Expressed in the developing nail bed mesenchyme.
Purification	Affinity purification
Clone ID	5D11
Note	For Research Use Only (RUO).
Protein Name	Homeobox protein MSX-1 Homeobox protein Hox-7 Msh homeobox 1-like protein
Clonality	Monoclonal
Conjugation	Unconjugated
Isotype	IgG1

Formulation	Ascitic fluid containing 0.03% sodium azide.
Storage Instruction	Store at -20°C, and avoid repeat freeze-thaw cycles.
Database Links	HGNC:7391OMIM:106600
Alternative Names	Homeobox protein MSX-1 Homeobox protein Hox-7 Msh homeobox 1-like protein
Function	Acts as a transcriptional repressor. May play a role in limb-pattern formation. Acts in cranofacial development and specifically in odontogenesis. Expression in the developing nail bed mesenchyme is important for nail plate thickness and integrity.
Cellular Localization	Nucleus.
Post-translational Modifications	Sumoylated by PIAS1, desumoylated by SENP1.

St John's Laboratory Ltd

F +44 (0)207 681 2580
T +44 (0)208 223 3081

W <http://www.stjohnslabs.com/>
E info@stjohnslabs.com