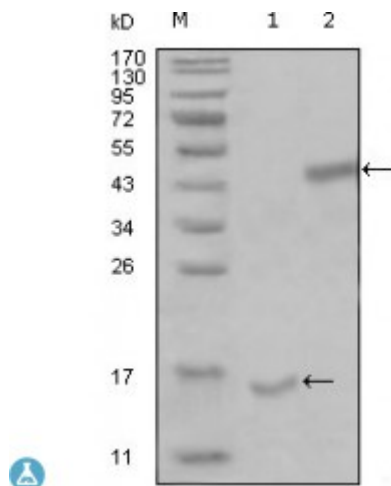


## Anti-PARL antibody



<b>Description</b>	Mouse monoclonal to PARL.
<b>Model</b>	STJ98307
<b>Host</b>	Mouse
<b>Reactivity</b>	Human
<b>Applications</b>	ELISA, WB
<b>Immunogen</b>	Purified recombinant fragment of PARL (aa112-167) expressed in E. Coli.
<b>Immunogen Region</b>	112-167aa
<b>Gene ID</b>	<a href="#">55486</a>
<b>Gene Symbol</b>	<a href="#">PARL</a>
<b>Dilution range</b>	WB 1:500-1:2000ELISA 1:10000
<b>Specificity</b>	PARL Monoclonal Antibody detects endogenous levels of PARL protein.
<b>Purification</b>	Affinity purification
<b>Clone ID</b>	8C4B2 / 1H12E10
<b>Note</b>	For Research Use Only (RUO).
<b>Protein Name</b>	Presenilins-associated rhomboid-like protein, mitochondrial Mitochondrial intramembrane cleaving protease PARL P-beta Pbeta
<b>Clonality</b>	Monoclonal
<b>Conjugation</b>	Unconjugated
<b>Isotype</b>	IgG2b

<b>Formulation</b>	Ascitic fluid containing 0.03% sodium azide.
<b>Storage Instruction</b>	Store at -20°C, and avoid repeat freeze-thaw cycles.
<b>Database Links</b>	<a href="#">HGNC:18253OMIM:607858</a>
<b>Alternative Names</b>	Presenilins-associated rhomboid-like protein, mitochondrial Mitochondrial intramembrane cleaving protease PARL P-beta Pbeta
<b>Function</b>	Required for the control of apoptosis during postnatal growth. Essential for proteolytic processing of an antiapoptotic form of OPA1 which prevents the release of mitochondrial cytochrome c in response to intrinsic apoptotic signals . Promotes changes in mitochondria morphology regulated by phosphorylation of P-beta domain.
<b>Cellular Localization</b>	Mitochondrion inner membrane P-beta: Nucleus. Translocated into the nucleus by an unknown mechanism .
<b>Post-translational Modifications</b>	P-beta is proteolytically processed (beta-cleavage) in a PARL-dependent manner. The cleavage is inhibited when residues Ser-65, Thr-69 and Ser-70 are all phosphorylated.

---

**St John's Laboratory Ltd**

**F** +44 (0)207 681 2580

**T** +44 (0)208 223 3081

**W** <http://www.stjohnslabs.com/>

**E** [info@stjohnslabs.com](mailto:info@stjohnslabs.com)