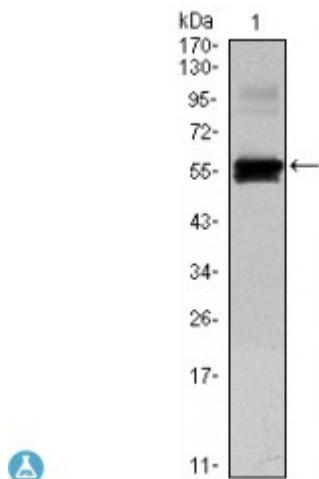


Anti-Pax-6 antibody



Description	Mouse monoclonal to Pax-6.
Model	STJ98310
Host	Mouse
Reactivity	Human
Applications	ELISA, FC, WB
Immunogen	Purified recombinant fragment of human Pax-6 expressed in E. Coli.
Gene ID	5080
Gene Symbol	PAX6
Dilution range	WB 1:500-1:2000FC 1:200-1:400ELISA 1:10000
Specificity	Pax-6 Monoclonal Antibody detects endogenous levels of Pax-6 protein.
Tissue Specificity	Fetal eye, brain, spinal cord and olfactory epithelium. Isoform 5a is less abundant than the PAX6 shorter form.
Purification	Affinity purification
Clone ID	1C8
Note	For Research Use Only (RUO).
Protein Name	Paired box protein Pax-6 Aniridia type II protein Oculorhombin
Clonality	Monoclonal
Conjugation	Unconjugated
Isotype	IgG1

Formulation	Ascitic fluid containing 0.03% sodium azide.
Storage Instruction	Store at -20°C, and avoid repeat freeze-thaw cycles.
Database Links	HGNC:8620OMIM:106210
Alternative Names	Paired box protein Pax-6 Aniridia type II protein Oculorhombin
Function	Transcription factor with important functions in the development of the eye, nose, central nervous system and pancreas. Required for the differentiation of pancreatic islet alpha cells . Competes with PAX4 in binding to a common element in the glucagon, insulin and somatostatin promoters. Regulates specification of the ventral neuron subtypes by establishing the correct progenitor domains . Isoform 5a appears to function as a molecular switch that specifies target genes.
Cellular Localization	Nucleus.
Post-translational Modifications	Ubiquitinated by TRIM11, leading to ubiquitination and proteasomal degradation.

St John's Laboratory Ltd

F +44 (0)207 681 2580

T +44 (0)208 223 3081

W <http://www.stjohnslabs.com/>

E info@stjohnslabs.com