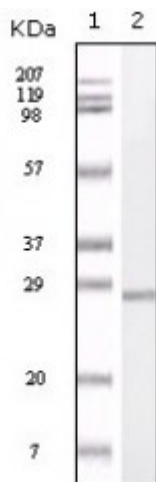


## Anti-S-100 alpha antibody



<b>Description</b>	Mouse monoclonal to S-100 alpha.
<b>Model</b>	STJ98373
<b>Host</b>	Mouse
<b>Reactivity</b>	Human
<b>Applications</b>	ELISA, IHC, WB
<b>Immunogen</b>	Purified recombinant fragment of S-100 alpha expressed in E. Coli.
<b>Gene ID</b>	<a href="#">6271</a>
<b>Gene Symbol</b>	<a href="#">S100A1</a>
<b>Dilution range</b>	WB 1:500-1:2000IHC 1:200-1:1000ELISA 1:10000
<b>Specificity</b>	S-100 alpha Monoclonal Antibody detects endogenous levels of S-100 alpha protein.
<b>Tissue Specificity</b>	Highly prevalent in heart. Also found in lesser quantities in skeletal muscle and brain.
<b>Purification</b>	Affinity purification
<b>Clone ID</b>	2C8B8 / 2C8E8 / 3C8D8
<b>Note</b>	For Research Use Only (RUO).
<b>Protein Name</b>	Protein S100-A1 S-100 protein alpha chain S-100 protein subunit alpha S100 calcium-binding protein A1
<b>Clonality</b>	Monoclonal
<b>Conjugation</b>	Unconjugated

<b>Isotype</b>	IgG1
<b>Formulation</b>	Ascitic fluid containing 0.03% sodium azide.
<b>Storage Instruction</b>	Store at -20°C, and avoid repeat freeze-thaw cycles.
<b>Database Links</b>	<a href="#">HGNC:10486OMIM:176940</a>
<b>Alternative Names</b>	Protein S100-A1 S-100 protein alpha chain S-100 protein subunit alpha S100 calcium-binding protein A1
<b>Function</b>	Probably acts as a Ca(2+) signal transducer . In response to an increase in intracellular Ca(2+) levels, binds calcium which triggers a conformational change . This conformational change allows interaction of S100A with specific target proteins, such as TPR-containing proteins, and the modulation of their activity .
<b>Cellular Localization</b>	Cytoplasm

---

**St John's Laboratory Ltd**

**F** +44 (0)207 681 2580  
**T** +44 (0)208 223 3081

**W** <http://www.stjohnslabs.com/>  
**E** [info@stjohnslabs.com](mailto:info@stjohnslabs.com)