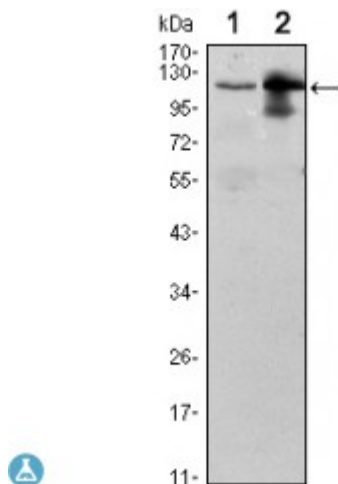


Anti-UBE1L antibody



Description	Mouse monoclonal to UBE1L.
Model	STJ98445
Host	Mouse
Reactivity	Human
Applications	ELISA, WB
Immunogen	Purified recombinant fragment of human UBE1L expressed in E. Coli.
Gene ID	7318
Gene Symbol	UBA7
Dilution range	WB 1:500-1:2000ELISA 1:10000
Specificity	UBE1L Monoclonal Antibody detects endogenous levels of UBE1L protein.
Tissue Specificity	Expressed in a variety of normal and tumor cell types, but is reduced in lung cancer cell lines.
Purification	Affinity purification
Clone ID	5B10
Note	For Research Use Only (RUO).
Protein Name	Ubiquitin-like modifier-activating enzyme 7 Ubiquitin-activating enzyme 7 D8 Ubiquitin-activating enzyme E1 homolog
Clonality	Monoclonal
Conjugation	Unconjugated

Isotype	IgG1
Formulation	Ascitic fluid containing 0.03% sodium azide.
Storage Instruction	Store at -20°C, and avoid repeat freeze-thaw cycles.
Database Links	HGNC:12471OMIM:191325
Alternative Names	Ubiquitin-like modifier-activating enzyme 7 Ubiquitin-activating enzyme 7 D8 Ubiquitin-activating enzyme E1 homolog
Function	Activates ubiquitin by first adenylating with ATP its C-terminal glycine residue and thereafter linking this residue to the side chain of a cysteine residue in E1, yielding a ubiquitin-E1 thioester and free AMP. Catalyzes the ISGylation of influenza A virus NS1 protein.
Post-translational Modifications	ISGylated.

St John's Laboratory Ltd

F +44 (0)207 681 2580

T +44 (0)208 223 3081

W <http://www.stjohnslabs.com/>

E info@stjohnslabs.com